

For Research Use Only

Mouse Sftpd Recombinant antibody, PBS Only (Detector)

Catalog Number:85985-2-PBS



Basic Information

Catalog Number:

85985-2-PBS

Concentration:

1 mg/ml

Source:

Rabbit

Isotype:

IgG

Immunogen Catalog Number:

EG2924

GenBank Accession Number:

NM_009160.2

GeneID (NCBI):

20390

UNIPROT ID:

P50404

Full Name:

surfactant associated protein D

Calculated MW:

38 kDa

Purification Method:

Protein A purification

CloneNo.:

250571B4

Applications

Tested Applications:

Sandwich ELISA, Indirect ELISA, Sample test

Species Specificity:

mouse

Background Information

Storage

Storage:

Store at -80°C.

The product is shipped with ice packs. Upon receipt, store it immediately at -80°C

Storage Buffer:

PBS only, pH7.3

For technical support and original validation data for this product please contact:

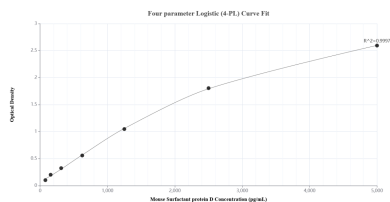
T: 4006900926

E: Proteintech-CN@ptglab.com

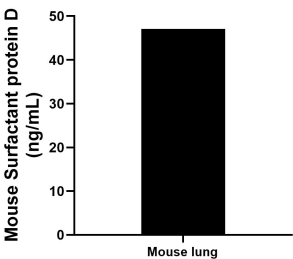
W: ptgcn.com

This product is exclusively available under Proteintech Group brand and is not available to purchase from any other manufacturer.

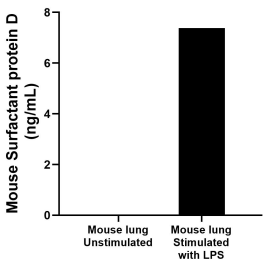
Selected Validation Data



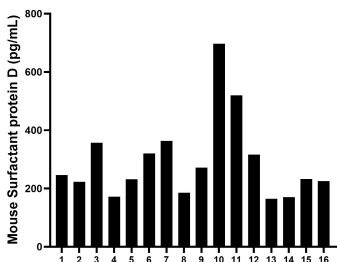
Sandwich ELISA standard curve of MP02322-1, Mouse Surfactant protein D Recombinant Matched Antibody Pair - PBS only. 85985-1-PBS was coated to a plate as the capture antibody and incubated with serial dilutions of standard Eg2924. 85985-2-PBS was HRP conjugated as the detection antibody. Range: 78.1-5000 pg/mL



The mean Surfactant protein D concentration was determined to be 47.1 ng/mL in mouse lung tissue extract based on a 5.3 mg/mL extract load.



Mouse lung, cut into 1-2 mm pieces, was cultured unstimulated or stimulated with 1 μ g/mL LPS for 3 days. The mean Surfactant protein D concentration was undetectable in unstimulated supernatant, 7.4 ng/mL in LPS stimulated supernatant.



Serum of sixteen mice was measured. The Surfactant protein D concentration of detected samples was determined to be 293.4 pg/mL with a range of 164.4-696.5 pg/mL