

For Research Use Only

# Mouse Surfactant protein D Recombinant antibody, PBS Only (Capture)

Catalog Number: 85985-1-PBS



## Basic Information

Catalog Number: 85985-1-PBS	GenBank Accession Number: NM_009160.2	Purification Method: Protein A purification
Concentration: 1 mg/ml	GeneID (NCBI): 20390	CloneNo.: 250571G8
Source: Rabbit	UNIPROT ID: P50404	
Isotype: IgG	Full Name: surfactant associated protein D	
Immunogen Catalog Number: EG2924	Calculated MW: 38 kDa	
	Observed MW: 40 kDa	

## Applications

**Tested Applications:**  
WB, IHC, IP, Sandwich ELISA, Indirect ELISA, Sample test

**Species Specificity:**  
mouse, rat

## Background Information

Surfactant protein D (SP-D) is a pattern recognition molecule of the collectin family of C-type lectins, which consist of four structural domains: a cysteine-rich N-terminal domain, a collagen-like region, an alpha-helical coiled-coil neck domain and a C-terminal lectin or carbohydrate-recognition domain (PMID: 16213021; 15030473). SP-D is primarily expressed and secreted by type II alveolar cells (PMID: 16684127). It plays a central role in the pulmonary host defence and the modulation of allergic responses.

## Storage

**Storage:**  
Store at -80°C.  
**The product is shipped with ice packs. Upon receipt, store it immediately at -80°C**

**Storage Buffer:**  
PBS only, pH7.3

For technical support and original validation data for this product please contact:

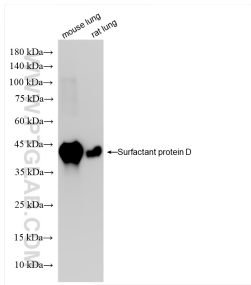
T: 4006900926

E: Proteintech-CN@ptglab.com

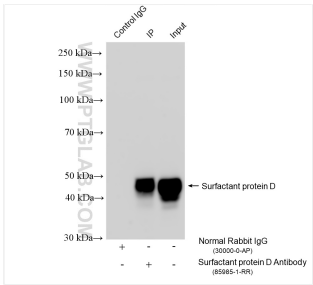
W: ptgcn.com

**This product is exclusively available under Proteintech Group brand and is not available to purchase from any other manufacturer.**

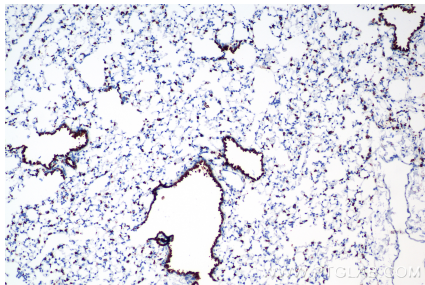
Selected Validation Data



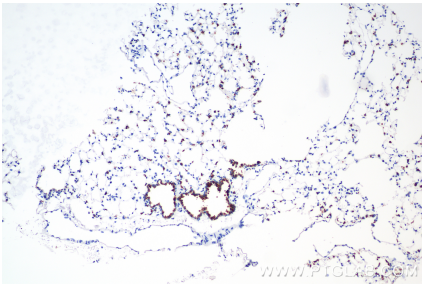
Various lysates were subjected to SDS PAGE followed by western blot with 85985-1-RR (Sftpd antibody) at dilution of 1:10000 incubated at room temperature for 1.5 hours. This data was developed using the same antibody clone with 85985-1-PBS in a different storage buffer formulation.



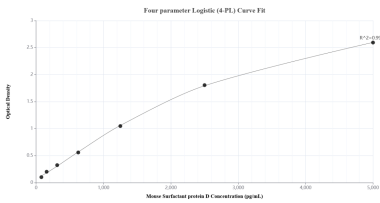
IP result of anti-Surfactant protein D (IP:85985-1-RR, 4ug; Detection:85985-1-RR 1:3000) with mouse lung tissue lysate 1760 ug. This data was developed using the same antibody clone with 85985-1-PBS in a different storage buffer formulation.



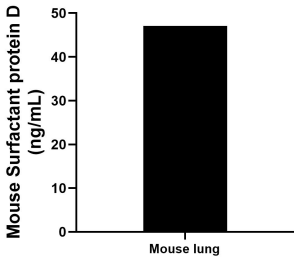
Immunohistochemical analysis of paraffin-embedded rat lung tissue slide using 85985-1-RR (Surfactant protein D antibody) at dilution of 1:800 (under 10x lens). Heat mediated antigen retrieval with Tris-EDTA buffer (pH 9.0). This data was developed using the same antibody clone with 85985-1-PBS in a different storage buffer formulation.



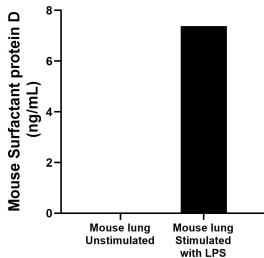
Immunohistochemical analysis of paraffin-embedded mouse lung tissue slide using 85985-1-RR (Surfactant protein D antibody) at dilution of 1:800 (under 10x lens). Heat mediated antigen retrieval with Tris-EDTA buffer (pH 9.0). This data was developed using the same antibody clone with 85985-1-PBS in a different storage buffer formulation.



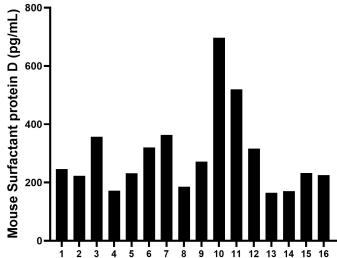
Sandwich ELISA standard curve of MP02322-1, Mouse Surfactant protein D Recombinant Matched Antibody Pair - PBS only. 85985-1-PBS was coated to a plate as the capture antibody and incubated with serial dilutions of standard Eg2924. 85985-2-PBS was HRP conjugated as the detection antibody. Range: 78.1-5000 pg/mL.



The mean Surfactant protein D concentration was determined to be 47.1 ng/mL in mouse lung tissue extract based on a 5.3 mg/mL extract load.



Mouse lung, cut into 1-2 mm pieces, was cultured unstimulated or stimulated with 1  $\mu$ g/mL LPS for 3 days. The mean Surfactant protein D concentration was undetectable in unstimulated supernatant, 7.4 ng/mL in LPS stimulated supernatant.



Serum of sixteen mice was measured. The Surfactant protein D concentration of detected samples was determined to be 293.4 pg/mL with a range of 164.4-696.5 pg/mL.