

For Research Use Only

LILRA5/CD85f Recombinant antibody

Catalog Number: 85984-1-RR



Basic Information

Catalog Number:

85984-1-RR

Concentration:

1000 µg/ml

Source:

Rabbit

Isotype:

IgG

Immunogen Catalog Number:

EG2737

GenBank Accession Number:

NM_021250.4

GeneID (NCBI):

353514

UNIPROT ID:

A6NI73-1

Full Name:

leukocyte immunoglobulin-like receptor, subfamily A (with TM domain), member 5

Calculated MW:

33 kDa

Observed MW:

35 kDa

Purification Method:

Protein A purification

CloneNo.:

250298B3

Recommended Dilutions:

WB: 1:1000-1:4000

Applications

Tested Applications:

WB, ELISA

Species Specificity:

human

Positive Controls:

WB : MCF-7 cells, Raji cells, U-937 cells

Background Information

LILRA5, also named as CD85f, ILT11, LILRB7 or LIR9, is a member of the leukocyte immunoglobulin-like receptor (LIR) family, which is a group of immune inhibitory and stimulatory receptors (PMID: 15304001). There are two membrane-bound and two soluble forms of LILRA5. The transmembrane LILRA5 contains a short cytoplasmic domain and a charged arginine residue within the transmembrane region (PMID: 19009525). It is mostly expressed in myeloid cells, including monocytes and neutrophils (PMID: 12393390). LILRA5 may play a role in triggering innate immune responses. It does not function in class I MHC antigens recognition (PMID: 16675463).

Storage

Storage:

Store at -20°C. Stable for one year after shipment.

Storage Buffer:

PBS with 0.02% sodium azide and 50% glycerol, pH7.3

Aliquoting is unnecessary for -20°C storage

For technical support and original validation data for this product please contact:

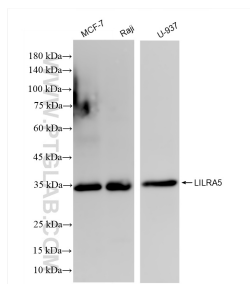
T: 4006900926

E: Proteintech-CN@ptglab.com

W: ptgcn.com

This product is exclusively available under Proteintech Group brand and is not available to purchase from any other manufacturer.

Selected Validation Data



Various lysates were subjected to SDS PAGE followed by western blot with 85984-1-RR (LILRA5 antibody) at dilution of 1:2000 incubated at room temperature for 1.5 hours.