

For Research Use Only

# PRKG1 Recombinant monoclonal antibody, PBS Only (Detector)

Catalog Number: 85983-2-PBS



## Basic Information

Catalog Number: 85983-2-PBS	GenBank Accession Number: BC127090	Purification Method: Protein A purification
Source: Rabbit	GeneID (NCBI): 5592	CloneNo.: 250348B12
Isotype: IgG	UNIPROT ID: Q13976	
Immunogen Catalog Number: AG16333	Full Name: protein kinase, cGMP-dependent, type I	
	Calculated MW: 686 aa, 78 kDa	

## Applications

Tested Applications:  
Cytometric bead array, Indirect ELISA

Species Specificity:  
human

## Background Information

### Storage

Storage:  
Store at -80°C.  
**The product is shipped with ice packs. Upon receipt, store it immediately at -80°C**

Storage Buffer:  
PBS only, pH7.3

For technical support and original validation data for this product please contact:

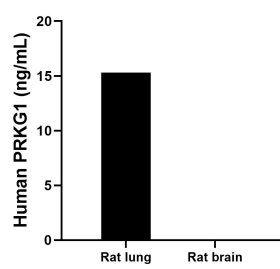
T: 4006900926

E: [Proteintech-CN@ptglab.com](mailto:Proteintech-CN@ptglab.com)

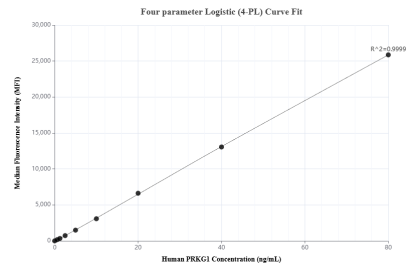
W: [ptgcn.com](http://ptgcn.com)

This product is exclusively available under Proteintech Group brand and is not available to purchase from any other manufacturer.

## Selected Validation Data



The mean PRKG1 concentration was determined to be 15.3 ng/mL in Rat lung tissue extract based on a 4.8 mg/mL extract load, Rat brain tissue extract were served as a negative control.



Cytometric bead array standard curve of MP02943-1, PRKG1 Recombinant Matched Antibody Pair, PBS Only. Capture antibody: 85983-1-PBS. Detection antibody: 85983-2-PBS. Standard: Ag16333. Range: 0.625-80 ng/mL.