

For Research Use Only

IFI30 Recombinant antibody

Catalog Number: 85982-1-RR



Basic Information

Catalog Number:

85982-1-RR

Concentration:

1000 μ g/ml

Source:

Rabbit

Isotype:

IgG

Immunogen Catalog Number:

AG2178

GenBank Accession Number:

BC021136

GeneID (NCBI):

10437

UNIPROT ID:

P13284

Full Name:

interferon, gamma-inducible protein

30

Calculated MW:

261 aa, 29 kDa

Observed MW:

30-35 kDa

Purification Method:

Protein A purification

CloneNo.:

250400A4

Recommended Dilutions:

WB: 1:5000-1:50000

Applications

Tested Applications:

WB, ELISA

Species Specificity:

human, rat

Positive Controls:

WB : HeLa cells, Daudi cells, HL-60 cells, Raji cells, rat spleen tissue

Background Information

IFI30(interferon, gamma-inducible protein 30) is also named as IP30, GILT, IFI-30, MGC32056, IFI30 and belongs to the GILT family. It can facilitate the processing and presentation to antigen-specific T cells of protein antigens containing disulfide bonds. IFI30 is inducibly up-regulated by IFN-g, as are MHC class II molecules, the associated invariant chain, and HLA-DM, which catalyses peptide loading in MHCs and the 35 kDa species is the IFI30 proform, and the 30-kDa species is the mature form(PMID:10639150). It can exist as a dimer(PMID:17142755).

Storage

Storage:

Store at -20°C. Stable for one year after shipment.

Storage Buffer:

PBS with 0.02% sodium azide and 50% glycerol, pH7.3

Aliquoting is unnecessary for -20°C storage

For technical support and original validation data for this product please contact:

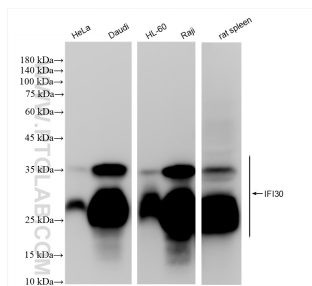
T: 4006900926

E: Proteintech-CN@ptglab.com

W: ptgcn.com

This product is exclusively available under Proteintech Group brand and is not available to purchase from any other manufacturer.

Selected Validation Data



Various lysates were subjected to SDS PAGE followed by western blot with 85982-1-RR (IFI30 antibody) at dilution of 1:10000 incubated at room temperature for 1.5 hours.