

For Research Use Only

KIFC1 Recombinant antibody, PBS Only (Capture)

Catalog Number: 85981-4-PBS



Basic Information

Catalog Number:

85981-4-PBS

Concentration:

1 mg/ml

Source:

Rabbit

Isotype:

IgG

Immunogen Catalog Number:

AG14492

GenBank Accession Number:

BC000712

GeneID (NCBI):

3833

UNIPROT ID:

Q9BW19

Full Name:

kinesin family member C1

Calculated MW:

673 aa, 74 kDa

Purification Method:

Protein A purification

CloneNo.:

250588B8

Applications

Tested Applications:

Sandwich ELISA, Indirect ELISA, Sample test

Species Specificity:

human

Background Information

Storage

Storage:

Store at -80°C.

The product is shipped with ice packs. Upon receipt, store it immediately at -80°C

Storage Buffer:

PBS only, pH7.3

For technical support and original validation data for this product please contact:

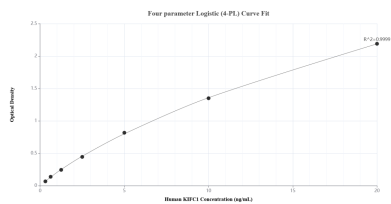
T: 4006900926

E: Proteintech-CN@ptglab.com

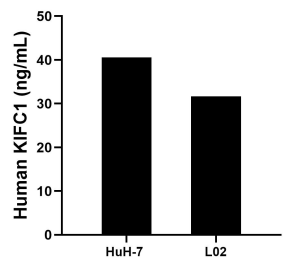
W: ptgcn.com

This product is exclusively available under Proteintech Group brand and is not available to purchase from any other manufacturer.

Selected Validation Data



Sandwich ELISA standard curve of MP02316-1, Human KIFC1 Recombinant Matched Antibody Pair - PBS only. 85981-4-PBS was coated to a plate as the capture antibody and incubated with serial dilutions of standard Ag14492. 85981-3-PBS was HRP conjugated as the detection antibody. Range: 0.313-20 ng/mL.



The mean KIFC1 concentration was determined to be 40.55 ng/mL in HuH-7 cell extract based on a 1.40 mg/mL extract load and 31.65 ng/mL in L02 cell extract based on a 1.30 mg/mL extract load.