

For Research Use Only

# ALDH1L1 Recombinant antibody

Catalog Number: 85980-2-RR



## Basic Information

Catalog Number:

85980-2-RR

Concentration:

1000 µg/ml

Source:

Rabbit

Isotype:

IgG

Immunogen Catalog Number:

AG11285

GenBank Accession Number:

BC027241

GeneID (NCBI):

10840

UNIPROT ID:

O75891

Full Name:

aldehyde dehydrogenase 1 family,  
member L1

Calculated MW:

99 kDa

Observed MW:

100 kDa

Purification Method:

Protein A purification

CloneNo.:

250565B12

Recommended Dilutions:

WB: 1:5000-1:50000

IF/ICC: 1:250-1:1000

## Applications

Tested Applications:

WB, IF/ICC, ELISA

Species Specificity:

human, mouse, rat

Positive Controls:

WB : mouse liver tissue, rat liver tissue

IF/ICC : Neuro-2a cells,

## Background Information

Aldehyde dehydrogenase 1 family member L1 (ALDH1L1), belongs to the aldehyde dehydrogenase family of proteins and is responsible for formate oxidation in vivo. Loss of ALDH1L1 is associated with decreased apoptosis, increased cell motility, and cancer progression. ALDH1L1 catalyzes the conversion of 10-formyltetrahydrofolate, nicotinamide adenine dinucleotide phosphate (NADP<sup>+</sup>), and water to tetrahydrofolate, NADPH, and carbon dioxide. ALDH1L1 has some isoforms with MW of 99, 88 and 55 kDa.

## Storage

Storage:

Store at -20°C. Stable for one year after shipment.

Storage Buffer:

PBS with 0.02% sodium azide and 50% glycerol, pH7.3

Aliquoting is unnecessary for -20°C storage

For technical support and original validation data for this product please contact:

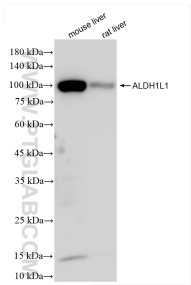
T: 4006900926

E: Proteintech-CN@ptglab.com

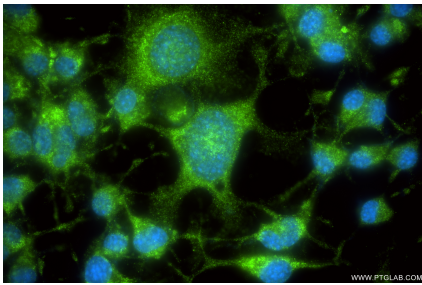
W: ptgcn.com

This product is exclusively available under Proteintech Group brand and is not available to purchase from any other manufacturer.

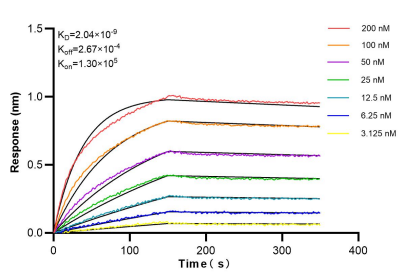
Selected Validation Data



mouse liver tissue were subjected to SDS PAGE followed by western blot with 85980-2-RR (ALDH1L1 antibody) at dilution of 1:10000 incubated at room temperature for 1.5 hours.



Immunofluorescent analysis of (-20°C Ethanol) fixed Neuro-2a cells using ALDH1L1 antibody (85980-2-RR, Clone: 250565B12 ) at dilution of 1:500 and CoraLite® 488-Conjugated Goat Anti-Rabbit IgG(H+L) (SA00013-2).



Biolayer interferometry (BLI) kinetic assays of 85980-2-RR against Human ALDH1L1 were performed. The affinity constant is 2.04 nM.