

For Research Use Only

# CD85j / LILRB1 Recombinant antibody, PBS Only (Capture)

Catalog Number: 85975-5-PBS



## Basic Information

Catalog Number:

85975-5-PBS

Concentration:

1 mg/ml

Source:

Rabbit

Isotype:

IgG

Immunogen Catalog Number:

EG3701

GenBank Accession Number:

BC015731

GeneID (NCBI):

10859

UNIPROT ID:

Q8NHL6

Full Name:

leukocyte immunoglobulin-like  
receptor, subfamily B (with TM and  
ITIM domains), member 1

Calculated MW:

71 kDa

Purification Method:

Protein A purification

CloneNo.:

250502H2

## Applications

Tested Applications:

Sandwich ELISA, Indirect ELISA, Sample test

Species Specificity:

human

## Background Information

### Storage

Storage:

Store at -80°C.

**The product is shipped with ice packs. Upon receipt, store it immediately at -80°C**

Storage Buffer:

PBS only, pH7.3

For technical support and original validation data for this product please contact:

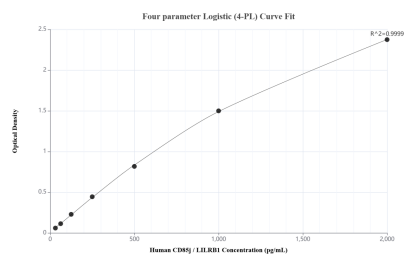
T: 4006900926

E: [Proteintech-CN@ptglab.com](mailto:Proteintech-CN@ptglab.com)

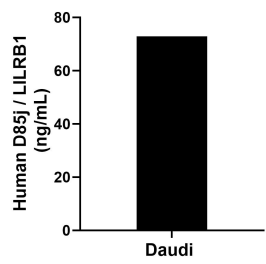
W: [ptgcn.com](http://ptgcn.com)

**This product is exclusively available under Proteintech Group brand and is not available to purchase from any other manufacturer.**

## Selected Validation Data



Sandwich ELISA standard curve of MP02236-2, Human CD85j / LILRB1 Recombinant Matched Antibody Pair - PBS only. 85975-5-PBS was coated to a plate as the capture antibody and incubated with serial dilutions of standard Eg3701. 85975-4-PBS was HRP conjugated as the detection antibody. Range: 31.3-2000 pg/mL.



The mean CD85j / LILRB1 concentration was determined to be 72.9 ng/mL in Daudi cell extract based on a 1.8 mg/mL extract load.