

For Research Use Only

CD85j / LILRB1 Recombinant antibody, PBS Only (Capture)

Catalog Number: 85975-2-PBS



Basic Information

Catalog Number:

85975-2-PBS

Concentration:

1 mg/ml

Source:

Rabbit

Isotype:

IgG

Immunogen Catalog Number:

EG3701

GenBank Accession Number:

BC015731

GeneID (NCBI):

10859

UNIPROT ID:

Q8NHL6

Full Name:

leukocyte immunoglobulin-like
receptor, subfamily B (with TM and
ITIM domains), member 1

Calculated MW:

71 kDa

Purification Method:

Protein A purification

CloneNo.:

250502A2

Applications

Tested Applications:

Cytometric bead array, Indirect ELISA, Sample test

Species Specificity:

human

Background Information

Storage

Storage:

Store at -80°C.

The product is shipped with ice packs. Upon receipt, store it immediately at -80°C

Storage Buffer:

PBS only, pH7.3

For technical support and original validation data for this product please contact:

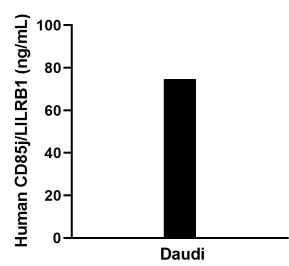
T: 4006900926

E: Proteintech-CN@ptglab.com

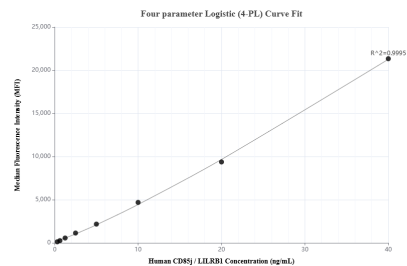
W: ptgcn.com

This product is exclusively available under Proteintech Group brand and is not available to purchase from any other manufacturer.

Selected Validation Data



The mean CD85j / LILRB1 concentration was determined to be 75.7 ng/mL in Daudi cell extract based on a 1.5 mg/mL extract load.



Cytometric bead array standard curve of MP02236-1, CD85j / LILRB1 Recombinant Matched Antibody Pair, PBS Only. Capture antibody: 85975-2-PBS. Detection antibody: 85975-1-PBS. Standard: Eg3701. Range: 0.313-40 ng/mL.