

For Research Use Only

LECT2 Recombinant antibody, PBS Only (Capture)

Catalog Number: 85970-2-PBS



Basic Information

Catalog Number:

85970-2-PBS

Concentration:

1 mg/ml

Source:

Rabbit

Isotype:

IgG

Immunogen Catalog Number:

EG3137

GenBank Accession Number:

NM_002302.2

GeneID (NCBI):

3950

UNIPROT ID:

O14960

Full Name:

leukocyte cell-derived chemotaxin 2

Calculated MW:

16 kDa

Purification Method:

Protein A purification

CloneNo.:

250102G11

Applications

Tested Applications:

Cytometric bead array, Sandwich ELISA, Indirect ELISA, Sample test

Species Specificity:

human

Background Information

Storage

Storage:

Store at -80°C.

The product is shipped with ice packs. Upon receipt, store it immediately at -80°C

Storage Buffer:

PBS only, pH7.3

For technical support and original validation data for this product please contact:

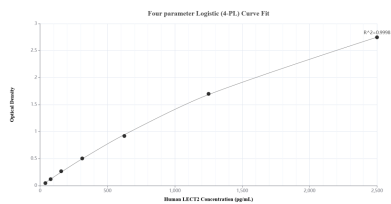
T: 4006900926

E: Proteintech-CN@ptglab.com

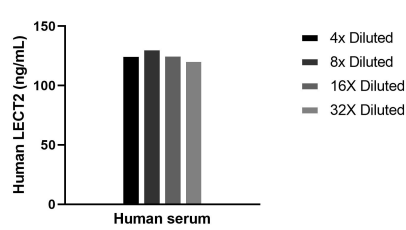
W: ptgcn.com

This product is exclusively available under Proteintech Group brand and is not available to purchase from any other manufacturer.

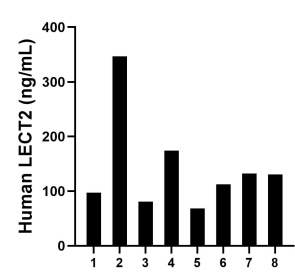
Selected Validation Data



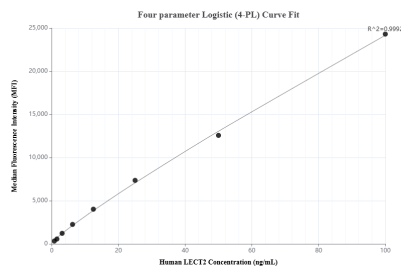
Sandwich ELISA standard curve of MP02238-2, Human LECT2 Recombinant Matched Antibody Pair - PBS only. 85970-2-PBS was coated to a plate as the capture antibody and incubated with serial dilutions of standard Eg3137. 85970-4-PBS was HRP conjugated as the detection antibody. Range: 39.1-2500 pg/mL.



The mean LECT2 concentration was determined to be 122.0 ng/mL in human serum.



Serum of eight individual healthy human donors was measured. The LECT2 concentration of detected samples was determined to be 146.6 ng/mL with a range of 68.1-346.5 ng/mL.



Cytometric bead array standard curve of MP02238-1, LECT2 Recombinant Matched Antibody Pair, PBS Only. Capture antibody: 85970-2-PBS. Detection antibody: 85970-1-PBS. Standard: Eg3137. Range: 0.781-100 ng/mL.