

For Research Use Only

# LECT2 Recombinant antibody, PBS Only (Detector)

Catalog Number: 85970-1-PBS



## Basic Information

Catalog Number:

85970-1-PBS

Concentration:

1 mg/ml

Source:

Rabbit

Isotype:

IgG

Immunogen Catalog Number:

EG3137

GenBank Accession Number:

NM\_002302.2

GeneID (NCBI):

3950

UNIPROT ID:

O14960

Full Name:

leukocyte cell-derived chemotaxin 2

Calculated MW:

16 kDa

Purification Method:

Protein A purification

CloneNo.:

250102C2

## Applications

Tested Applications:

Cytometric bead array, Indirect ELISA, Sample test

Species Specificity:

human

## Background Information

### Storage

Storage:

Store at -80°C.

The product is shipped with ice packs. Upon receipt, store it immediately at -80°C

Storage Buffer:

PBS only, pH7.3

For technical support and original validation data for this product please contact:

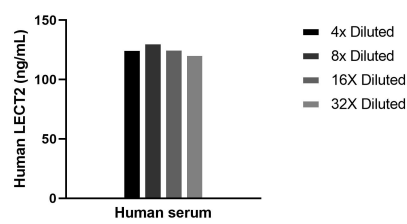
T: 4006900926

E: [Proteintech-CN@ptglab.com](mailto:Proteintech-CN@ptglab.com)

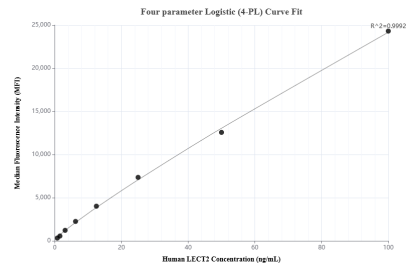
W: [ptgcn.com](http://ptgcn.com)

This product is exclusively available under Proteintech Group brand and is not available to purchase from any other manufacturer.

## Selected Validation Data



The mean LECT2 concentration was determined to be 122.0 ng/mL in human serum.



Cytometric bead array standard curve of MP02238-1, LECT2 Recombinant Matched Antibody Pair, PBS Only. Capture antibody: 85970-2-PBS. Detection antibody: 85970-1-PBS. Standard: Eg3137. Range: 0.781-100 ng/mL