

For Research Use Only

Mouse CtSD Recombinant antibody, PBS Only (Capture)

Catalog Number: 85964-4-PBS



Basic Information

Catalog Number:

85964-4-PBS

Concentration:

1 mg/ml

Source:

Rabbit

Isotype:

IgG

Immunogen Catalog Number:

EG2986

GenBank Accession Number:

NM_009983.3

GeneID (NCBI):

13033

UNIPROT ID:

P18242

Full Name:

cathepsin D

Calculated MW:

45 kDa

Purification Method:

Protein A purification

CloneNo.:

250329D6

Applications

Tested Applications:

Sandwich ELISA, Indirect ELISA, Sample test

Species Specificity:

mouse

Background Information

Storage

Storage:

Store at -80°C.

The product is shipped with ice packs. Upon receipt, store it immediately at -80°C

Storage Buffer:

PBS only, pH7.3

For technical support and original validation data for this product please contact:

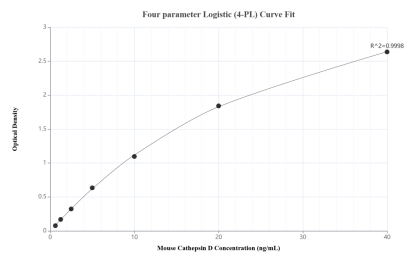
T: 4006900926

E: Proteintech-CN@ptglab.com

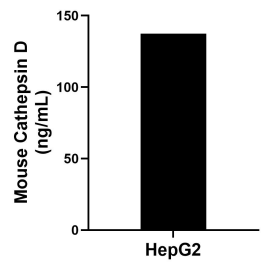
W: ptgcn.com

This product is exclusively available under Proteintech Group brand and is not available to purchase from any other manufacturer.

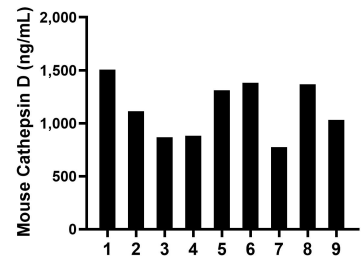
Selected Validation Data



Sandwich ELISA standard curve of MP02204-2, Human Cathepsin D Recombinant Matched Antibody Pair - PBS only. 85964-4-PBS was coated to a plate as the capture antibody and incubated with serial dilutions of standard Eg2986. 85964-1-PBS was HRP conjugated as the detection antibody. Range: 0.625-40 ng/mL



The mean Cathepsin D concentration was determined to be 137.30 ng/mL in HepG2 cell extract based on a 0.90 mg/mL extract load.



Serum of nine mice was measured. The Cathepsin D concentration of detected samples was determined to be 1,136.75 ng/mL with a range of 773.75-1,505.92 pg/mL