

For Research Use Only

# Cathepsin D Recombinant antibody

Catalog Number: 85964-1-RR



## Basic Information

Catalog Number:

85964-1-RR

Concentration:

1000  $\mu$ g/ml

Source:

Rabbit

Isotype:

IgG

Immunogen Catalog Number:

EG2986

GenBank Accession Number:

NM\_009983.3

GeneID (NCBI):

13033

UNIPROT ID:

P18242

Full Name:

cathepsin D

Calculated MW:

45 kDa

Observed MW:

46 kDa, 28 kDa

Purification Method:

Protein A purification

CloneNo.:

250329A3

Recommended Dilutions:

WB 1:2000-1:10000

## Applications

Tested Applications:

WB, ELISA

Species Specificity:

mouse

Positive Controls:

WB : Neuro-2a cells, RAW 264.7 cells, NIH/3T3 cells

## Background Information

CTSD (Cathepsin D) also named CPSD, is a representative aspartic proteinase in lysosomes and is widely distributed in various tissue cells of mammals. The expression level of CTSD varies depending on the tissue, whereas neurons in CNS tissues possess abundant CTSD. CTSD is synthesized as a 52-kDa precursor that is converted into an active ~48-kDa single-chain intermediate in the endosomes, and then into a fully active mature form, composed of a 28-kDa heavy chain and a 14-kDa light chain, in the lysosomes (PMID: 10995834, PMID: 7641679, PMID: 30051532).

## Storage

Storage:

Store at -20°C. Stable for one year after shipment.

Storage Buffer:

PBS with 0.02% sodium azide and 50% glycerol, pH7.3

Aliquoting is unnecessary for -20°C storage

For technical support and original validation data for this product please contact:

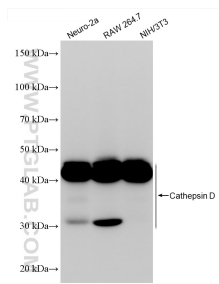
T: 4006900926

E: [Proteintech-CN@ptglab.com](mailto:Proteintech-CN@ptglab.com)

W: [ptgcn.com](http://ptgcn.com)

This product is exclusively available under Proteintech Group brand and is not available to purchase from any other manufacturer.

## Selected Validation Data



Various lysates were subjected to SDS PAGE followed by western blot with 85964-1-RR (Cathepsin D antibody) at dilution of 1:5000 incubated at room temperature for 1.5 hours.