

For Research Use Only

Mouse Cathepsin D Recombinant antibody, PBS Only (Detector)

Catalog Number: 85964-1-PBS



Basic Information

Catalog Number: 85964-1-PBS	GenBank Accession Number: NM_009983.3	Purification Method: Protein A purification
Concentration: 1 mg/ml	GeneID (NCBI): 13033	CloneNo.: 250329A3
Source: Rabbit	UNIPROT ID: P18242	
Isotype: IgG	Full Name: cathepsin D	
Immunogen Catalog Number: EG2986	Calculated MW: 45 kDa	
	Observed MW: 46 kDa, 28 kDa	

Applications

Tested Applications:
WB, Sandwich ELISA, Indirect ELISA, Sample test

Species Specificity:
mouse

Background Information

CTSD (Cathepsin D) also named CPSD, is a representative aspartic proteinase in lysosomes and is widely distributed in various tissue cells of mammals. The expression level of CTSD varies depending on the tissue, whereas neurons in CNS tissues possess abundant CTSD. CTSD is synthesized as a 52-kDa precursor that is converted into an active ~48-kDa single-chain intermediate in the endosomes, and then into a fully active mature form, composed of a 28-kDa heavy chain and a 14-kDa light chain, in the lysosomes (PMID: 10995834, PMID: 7641679, PMID: 30051532).

Storage

Storage:
Store at -80°C.
The product is shipped with ice packs. Upon receipt, store it immediately at -80°C

Storage Buffer:
PBS only, pH7.3

For technical support and original validation data for this product please contact:

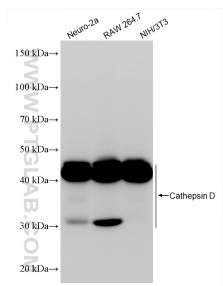
T: 4006900926

E: Proteintech-CN@ptglab.com

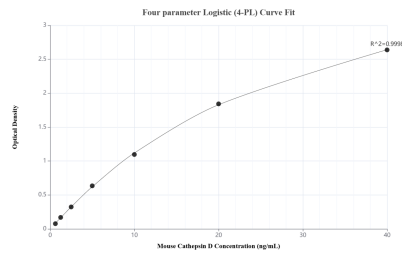
W: ptgcn.com

This product is exclusively available under Proteintech Group brand and is not available to purchase from any other manufacturer.

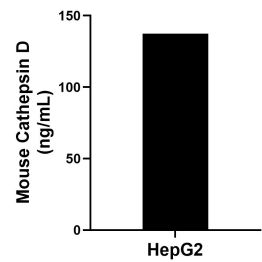
Selected Validation Data



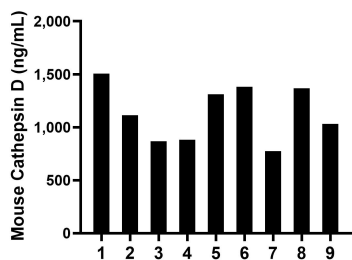
Various lysates were subjected to SDS PAGE followed by western blot with 85964-1-RR (Cathepsin D antibody) at dilution of 1:5000 incubated at room temperature for 1.5 hours. This data was developed using the same antibody clone with 85964-1-PBS in a different storage buffer formulation.



Sandwich ELISA standard curve of MP02204-2, Human Cathepsin D Recombinant Matched Antibody Pair - PBS only. 85964-4-PBS was coated to a plate as the capture antibody and incubated with serial dilutions of standard Eg2986. 85964-1-PBS was HRP conjugated as the detection antibody. Range: 0.625-40 ng/mL.



The mean Cathepsin D concentration was determined to be 137.30 ng/mL in HepG2 cell extract based on a 0.90 mg/mL extract load.



Serum of nine mice was measured. The Cathepsin D concentration of detected samples was determined to be 1,136.75 ng/mL with a range of 773.75-1,505.92 pg/mL.