

For Research Use Only

# ENPEP Recombinant antibody

Catalog Number: 85963-1-RR



## Basic Information

Catalog Number:

85963-1-RR

Concentration:

1000  $\mu$ g/ml

Source:

Rabbit

Isotype:

IgG

Immunogen Catalog Number:

EG2736

GenBank Accession Number:

NM\_001977.3

GeneID (NCBI):

2028

UNIPROT ID:

Q07075

Full Name:

glutamyl aminopeptidase  
(aminopeptidase A)

Calculated MW:

109 kDa

Observed MW:

140 kDa

Purification Method:

Protein A purification

CloneNo.:

250264B6

Recommended Dilutions:

WB 1:1000-1:2000

## Applications

Tested Applications:

WB, ELISA

Species Specificity:

human, mouse, rat

Positive Controls:

WB: mouse kidney tissue, human kidney tissue, rat lung tissue, rat kidney tissue, mouse lung tissue, =

## Background Information

ENPEP is the gene encoding the protein glutamyl aminopeptidase, also known as aminopeptidase A (APA), human kidney differentiation antigen (gp160). A type 2 membrane zinc metalloenzyme, APA is a general-purpose protease that primarily serves to cleave the acidic N-terminal aspartate and glutamyl residues of a variety of peptides, most significantly angiotensin 2 (ANG2, ang1-8), cholecystokinin-8 (CCK8), and neurokinin A. The presence of  $\text{Ca}^{2+}$  augments both the enzymatic efficiency and specificity of APA, increasing its selectivity towards the aforementioned acidic amino acids. Conversely, in the absence of calcium, APA can bind a wider range of N-terminal neutral and basic amino acids, some of which are cleaved, while others bind without proteolysis.

## Storage

Storage:

Store at  $-20^{\circ}\text{C}$ . Stable for one year after shipment.

Storage Buffer:

PBS with 0.02% sodium azide and 50% glycerol, pH7.3

Aliquoting is unnecessary for  $-20^{\circ}\text{C}$  storage

For technical support and original validation data for this product please contact:

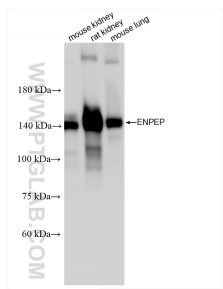
T: 4006900926

E: [Proteintech-CN@ptglab.com](mailto:Proteintech-CN@ptglab.com)

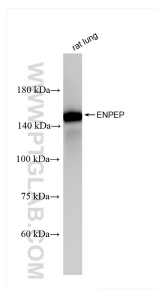
W: [ptgcn.com](http://ptgcn.com)

This product is exclusively available under Proteintech Group brand and is not available to purchase from any other manufacturer.

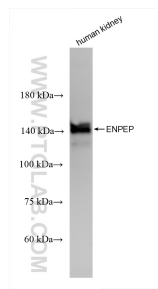
## Selected Validation Data



Various lysates were subjected to SDS PAGE followed by western blot with 85963-1-RR (ENPEP antibody) at dilution of 1:1000 incubated at room temperature for 1.5 hours.



rat lung tissue were subjected to SDS PAGE followed by western blot with 85963-1-RR (ENPEP antibody) at dilution of 1:1000 incubated at room temperature for 1.5 hours.



human kidney tissue were subjected to SDS PAGE followed by western blot with 85963-1-RR (ENPEP antibody) at dilution of 1:1000 incubated at room temperature for 1.5 hours.