

For Research Use Only

# RPS2 Recombinant antibody

Catalog Number: 85956-1-RR



## Basic Information

Catalog Number:

85956-1-RR

Concentration:

1000 µg/ml

Source:

Rabbit

Isotype:

IgG

Immunogen Catalog Number:

AG28322

GenBank Accession Number:

BC066321

GeneID (NCBI):

6187

UNIPROT ID:

P15880

Full Name:

ribosomal protein S2

Calculated MW:

31 kDa

Observed MW:

33 kDa

Purification Method:

Protein A purification

CloneNo.:

250165F12

Recommended Dilutions:

WB: 1:5000-1:50000

## Applications

Tested Applications:

WB, ELISA

Species Specificity:

human

Positive Controls:

WB : HeLa cells, A549 cells, HEK-293T cells, K-562 cells, MCF-7 cells

## Background Information

RPS2 gene encodes a ribosomal protein that is a component of the 40S subunit. The protein belongs to the S5P family of ribosomal proteins. It is located in the cytoplasm. This gene shares sequence similarity with mouse LLRep3. It is co-transcribed with the small nucleolar RNA gene U64, which is located in its third intron. As is typical for genes encoding ribosomal proteins, there are multiple processed pseudogenes of this gene dispersed through the genome. [provided by RefSeq, Jul 2008]

## Storage

Storage:

Store at -20°C. Stable for one year after shipment.

Storage Buffer:

PBS with 0.02% sodium azide and 50% glycerol, pH7.3

Aliquoting is unnecessary for -20°C storage

For technical support and original validation data for this product please contact:

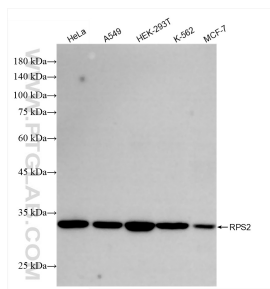
T: 4006900926

E: Proteintech-CN@ptglab.com

W: ptgcn.com

This product is exclusively available under Proteintech Group brand and is not available to purchase from any other manufacturer.

## Selected Validation Data



Various lysates were subjected to SDS PAGE followed by western blot with 85956-1-RR (RPS2 antibody) at dilution of 1:10000 incubated at room temperature for 1.5 hours.