

For Research Use Only

PPIE Recombinant antibody, PBS Only (Capture)

Catalog Number: 85952-3-PBS



Basic Information

Catalog Number:

85952-3-PBS

Concentration:

1 mg/ml

Source:

Rabbit

Isotype:

IgG

Immunogen Catalog Number:

AG7603

GenBank Accession Number:

BC004898

GeneID (NCBI):

10450

UNIPROT ID:

Q9UNP9

Full Name:

peptidylprolyl isomerase E
(cyclophilin E)

Calculated MW:

33 kDa

Purification Method:

Protein A purification

CloneNo.:

250296B6

Applications

Tested Applications:

Sandwich ELISA, Indirect ELISA, Sample test

Species Specificity:

human

Background Information

Storage

Storage:

Store at -80°C.

The product is shipped with ice packs. Upon receipt, store it immediately at -80°C

Storage Buffer:

PBS only, pH7.3

For technical support and original validation data for this product please contact:

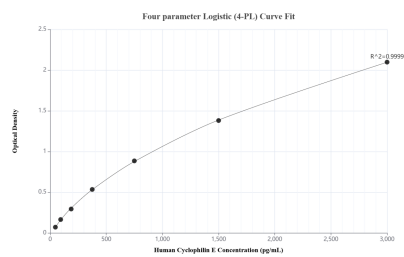
T: 4006900926

E: Proteintech-CN@ptglab.com

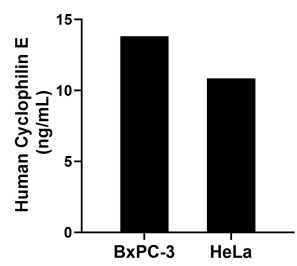
W: ptgcn.com

This product is exclusively available under Proteintech Group brand and is not available to purchase from any other manufacturer.

Selected Validation Data



Sandwich ELISA standard curve of MP02219-1, Human Cyclophilin E Recombinant Matched Antibody Pair - PBS only. 85952-3-PBS was coated to a plate as the capture antibody and incubated with serial dilutions of standard Ag7603. 85952-2-PBS was HRP conjugated as the detection antibody. Range: 46.9-3000 pg/mL.



The mean Cyclophilin E concentration was determined to be 13.81 ng/mL in BxPC-3 cell extract based on a 2.00 mg/mL extract load and 10.85 ng/mL in HeLa cell extract based on a 1.30 mg/mL extract load.