

For Research Use Only

# MCEE Recombinant antibody

Catalog Number: 85948-1-RR



## Basic Information

Catalog Number:

85948-1-RR

Concentration:

1000  $\mu$ g/ml

Source:

Rabbit

Isotype:

IgG

Immunogen Catalog Number:

AG9665

GenBank Accession Number:

BC020825

GeneID (NCBI):

84693

UNIPROT ID:

Q96PE7

Full Name:

methylmalonyl CoA epimerase

Calculated MW:

176 aa, 19 kDa

Observed MW:

17 kDa

Purification Method:

Protein A purification

CloneNo.:

250393G9

Recommended Dilutions:

WB 1:5000-1:50000

## Applications

Tested Applications:

WB, ELISA

Species Specificity:

human, mouse, rat

Positive Controls:

WB : HepG2 cells, rat liver tissue, L02 cells, SK-BR-3 cells, mouse heart tissue

## Background Information

### Storage

Storage:

Store at -20°C. Stable for one year after shipment.

Storage Buffer:

PBS with 0.02% sodium azide and 50% glycerol, pH7.3

Aliquoting is unnecessary for -20°C storage

For technical support and original validation data for this product please contact:

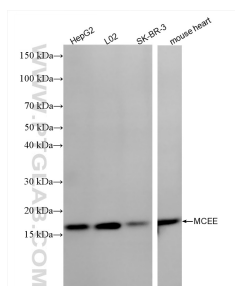
T: 4006900926

E: [Proteintech-CN@ptglab.com](mailto:Proteintech-CN@ptglab.com)

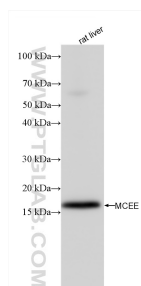
W: [ptgcn.com](http://ptgcn.com)

This product is exclusively available under Proteintech Group brand and is not available to purchase from any other manufacturer.

## Selected Validation Data



Various lysates were subjected to SDS PAGE followed by western blot with 85948-1-RR (MCEE antibody) at dilution of 1:10000 incubated at room temperature for 1.5 hours.



rat liver tissue were subjected to SDS PAGE followed by western blot with 85948-1-RR (MCEE antibody) at dilution of 1:10000 incubated at room temperature for 1.5 hours.