

For Research Use Only

# SSB Recombinant antibody, PBS Only (Detector)

Catalog Number: 85944-3-PBS



## Basic Information

Catalog Number:

85944-3-PBS

Concentration:

1 mg/ml

Source:

Rabbit

Isotype:

IgG

Immunogen Catalog Number:

AG2294

GenBank Accession Number:

BC001289

GeneID (NCBI):

6741

UNIPROT ID:

P05455

Full Name:

Sjogren syndrome antigen B (autoantigen La)

Calculated MW:

408 aa, 47 kDa

Purification Method:

Protein A purification

CloneNo.:

250465C3

## Applications

Tested Applications:

Sandwich ELISA, Indirect ELISA, Sample test

Species Specificity:

human

## Background Information

### Storage

Storage:

Store at -80°C.

**The product is shipped with ice packs. Upon receipt, store it immediately at -80°C**

Storage Buffer:

PBS only, pH7.3

For technical support and original validation data for this product please contact:

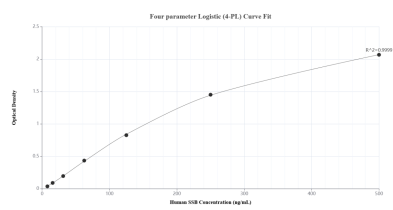
T: 4006900926

E: [Proteintech-CN@ptglab.com](mailto:Proteintech-CN@ptglab.com)

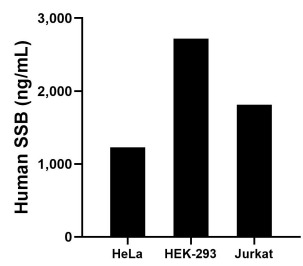
W: [ptgcn.com](http://ptgcn.com)

**This product is exclusively available under Proteintech Group brand and is not available to purchase from any other manufacturer.**

## Selected Validation Data



Sandwich ELISA standard curve of MP02269-1, Human SSB Recombinant Matched Antibody Pair - PBS only. 85944-1-PBS was coated to a plate as the capture antibody and incubated with serial dilutions of standard Ag2294. 85944-3-PBS was HRP conjugated as the detection antibody. Range: 7.81-500 ng/mL.



The mean SSB concentration was determined to be 1,226.41 ng/mL in HeLa cell extract based on a 1.30 mg/mL extract load, 2718.95 ng/mL in HEK-293 cell extract based on a 2.20 mg/mL extract load and 1,813.81 ng/mL in Jurkat cell extract based on a 1.90 mg/mL extract load.