

For Research Use Only

SSB Recombinant antibody

Catalog Number: 85944-2-RR



Basic Information

Catalog Number:

85944-2-RR

Concentration:

1000 µg/ml

Source:

Rabbit

Isotype:

IgG

Immunogen Catalog Number:

AG2294

GenBank Accession Number:

BC001289

GeneID (NCBI):

6741

UNIPROT ID:

P05455

Full Name:

Sjogren syndrome antigen B
(autoantigen La)

Calculated MW:

408 aa, 47 kDa

Observed MW:

46-50 kDa

Purification Method:

Protein A purification

CloneNo.:

250465G10

Recommended Dilutions:

WB 1:2000-1:10000

IF/ICC 1:500-1:2000

Applications

Tested Applications:

WB, IF/ICC, ELISA

Species Specificity:

human

Positive Controls:

WB : HeLa cells, HEK-293 cells, Jurkat cells, Ramos cells, Raji cells

IF/ICC : HeLa cells,

Background Information

Storage

Storage:

Store at -20°C. Stable for one year after shipment.

Storage Buffer:

PBS with 0.02% sodium azide and 50% glycerol, pH7.3

Aliquoting is unnecessary for -20°C storage

For technical support and original validation data for this product please contact:

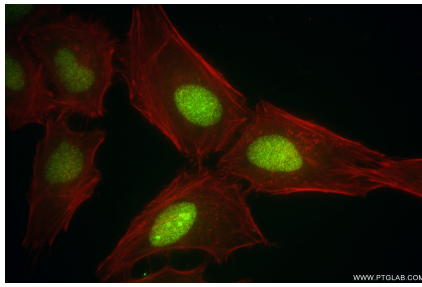
T: 4006900926

E: Proteintech-CN@ptglab.com

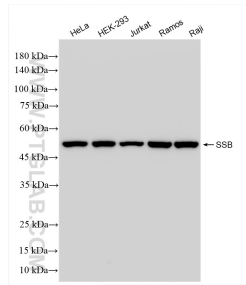
W: ptgcn.com

This product is exclusively available under Proteintech Group brand and is not available to purchase from any other manufacturer.

Selected Validation Data



Immunofluorescent analysis of (4% PFA) fixed HeLa cells using SSB antibody (85944-2-RR, Clone: 250465G10) at dilution of 1:1000 and CoraLite®488-Conjugated Goat Anti-Rabbit IgG(H+L) (SA00013-2), CL594-Phalloidin (red).



Various lysates were subjected to SDS PAGE followed by western blot with 85944-2-RR (SSB antibody) at dilution of 1:5000 incubated at room temperature for 1.5 hours.