

For Research Use Only

# GRK1 Recombinant antibody

Catalog Number: 85942-1-RR



## Basic Information

Catalog Number: 85942-1-RR	GenBank Accession Number: BC140945	Purification Method: Protein A purification
Concentration: 1000 µg/ml	GeneID (NCBI): 6011	CloneNo.: 250433A4
Source: Rabbit	UNIPROT ID: Q15835	Recommended Dilutions: WB: 1:2000-1:10000 IHC: 1:2500-1:10000 IF-P: 1:500-1:2000
Isotype: IgG	Full Name: G protein-coupled receptor kinase 1	
Immunogen Catalog Number: AG18063	Calculated MW: 563 aa, 64 kDa Observed MW: 64 kDa	

## Applications

Tested Applications: WB, IHC, IF-P, ELISA	Positive Controls:
Species Specificity: human, mouse, rat	WB : mouse eye tissue, mouse retina tissue
<b>Note-IHC: suggested antigen retrieval with TE buffer pH 9.0; (*) Alternatively, antigen retrieval may be performed with citrate buffer pH 6.0</b>	IHC : mouse eye tissue,
	IF-P : mouse eye tissue,

## Background Information

GRK1(G protein-coupled receptor kinase 1) is also named as RHOK, RK, GPRK1, and belongs to the AGC Ser/Thr protein kinase family. It is involved in quenching of light-induced signal transduction in the phosphoreceptor. GRK1 is a photoreceptor-specific enzyme that mediates adaptation of photoreceptors to light and protects these cells against light-induced injury.

## Storage

Storage:  
Store at -20°C. Stable for one year after shipment.  
Storage Buffer:  
PBS with 0.02% sodium azide and 50% glycerol, pH7.3  
Aliquoting is unnecessary for -20°C storage

For technical support and original validation data for this product please contact:

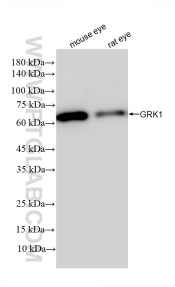
T: 4006900926

E: Proteintech-CN@ptglab.com

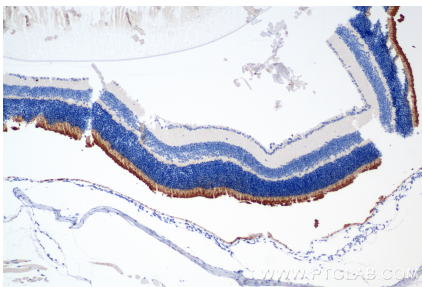
W: ptgcn.com

This product is exclusively available under Proteintech Group brand and is not available to purchase from any other manufacturer.

Selected Validation Data



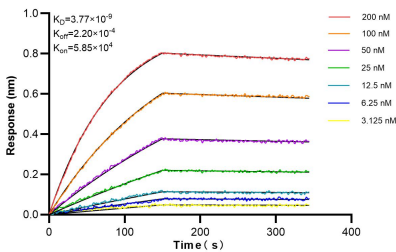
Various lysates were subjected to SDS PAGE followed by western blot with 85942-1-RR (GRK1 antibody) at dilution of 1:5000 incubated at room temperature for 1.5 hours.



Immunohistochemical analysis of paraffin-embedded mouse eye tissue slide using 85942-1-RR (GRK1 antibody) at dilution of 1:5000 (under 10x lens). Heat mediated antigen retrieval with Tris-EDTA buffer (pH 9.0).



Immunofluorescent analysis of (4% PFA) fixed paraffin-embedded mouse eye tissue using GRK1 antibody (85942-1-RR, Clone: 250433A4 ) at dilution of 1:1000 and CoraLite®488-Conjugated Goat Anti-Rabbit IgG(H+L) (SA00013-2). Heat mediated antigen retrieval with Tris-EDTA buffer (pH 9.0).



Biolayer interferometry (BLI) kinetic assays of 85942-1-RR against Human GRK1 were performed. The affinity constant is 3.77 nM.