

For Research Use Only

GRK1 Recombinant antibody, PBS Only

Catalog Number: 85942-1-PBS



Basic Information

Catalog Number:

85942-1-PBS

Concentration:

1 mg/ml

Source:

Rabbit

Isotype:

IgG

Immunogen Catalog Number:

AG18063

GenBank Accession Number:

BC140945

GeneID (NCBI):

6011

UNIPROT ID:

Q15835

Full Name:

G protein-coupled receptor kinase 1

Calculated MW:

563 aa, 64 kDa

Observed MW:

64 kDa

Purification Method:

Protein A purification

CloneNo.:

250433A4

Applications

Tested Applications:

WB, IHC, IF-P, Indirect ELISA

Species Specificity:

human, mouse, rat

Background Information

GRK1 (G protein-coupled receptor kinase 1) is also named as RHOK, RK, GPRK1, and belongs to the AGC Ser/Thr protein kinase family. It is involved in quenching of light-induced signal transduction in the photoreceptor. GRK1 is a photoreceptor-specific enzyme that mediates adaptation of photoreceptors to light and protects these cells against light-induced injury.

Storage

Storage:

Store at -80°C.

The product is shipped with ice packs. Upon receipt, store it immediately at -80°C

Storage Buffer:

PBS only, pH7.3

For technical support and original validation data for this product please contact:

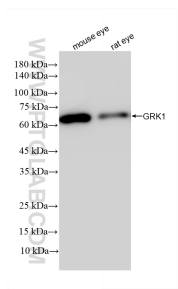
T: 4006900926

E: Proteintech-CN@ptglab.com

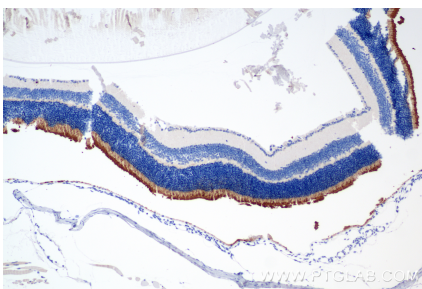
W: ptgcn.com

This product is exclusively available under Proteintech Group brand and is not available to purchase from any other manufacturer.

Selected Validation Data



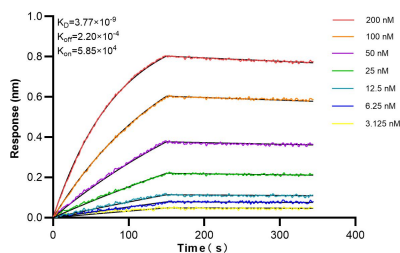
Various lysates were subjected to SDS PAGE followed by western blot with 85942-1-RR (GRK1 antibody) at dilution of 1:5000 incubated at room temperature for 1.5 hours. This data was developed using the same antibody clone with 85942-1-PBS in a different storage buffer formulation.



Immunohistochemical analysis of paraffin-embedded mouse eye tissue slide using 85942-1-RR (GRK1 antibody) at dilution of 1:5000 (under 10x lens). Heat mediated antigen retrieval with Tris-EDTA buffer (pH 9.0). This data was developed using the same antibody clone with 85942-1-PBS in a different storage buffer formulation.



Immunofluorescent analysis of (4% PFA) fixed paraffin-embedded mouse eye tissue using GRK1 antibody (85942-1-RR, Clone: 250433A4) at dilution of 1:1000 and CoraLite®488-Conjugated Goat Anti-Rabbit IgG(H+L) (SA00013-2). Heat mediated antigen retrieval with Tris-EDTA buffer (pH 9.0). This data was developed using the same antibody clone with 85942-1-PBS in a different storage buffer formulation.



Biolayer interferometry (BLI) kinetic assays of 85942-1-RR against Human GRK1 were performed. The affinity constant is 3.77 nM.