

For Research Use Only

# CA6 Recombinant antibody, PBS Only (Capture/Detector)

Catalog Number: 85940-2-PBS



## Basic Information

Catalog Number:

85940-2-PBS

Concentration:

1 mg/ml

Source:

Rabbit

Isotype:

IgG

Immunogen Catalog Number:

EG2963

GenBank Accession Number:

NM\_001215.3

GeneID (NCBI):

765

UNIPROT ID:

P23280-1

Full Name:

carbonic anhydrase VI

Calculated MW:

35 kDa

Purification Method:

Protein A purification

CloneNo.:

250412E5

## Applications

Tested Applications:

Cytometric bead array, Sandwich ELISA, Indirect ELISA,  
Sample test

Species Specificity:

human

## Background Information

### Storage

Storage:

Store at -80°C.

**The product is shipped with ice packs. Upon receipt, store it immediately at -80°C**

Storage Buffer:

PBS only, pH7.3

For technical support and original validation data for this product please contact:

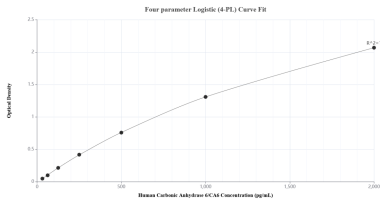
T: 4006900926

E: [Proteintech-CN@ptglab.com](mailto:Proteintech-CN@ptglab.com)

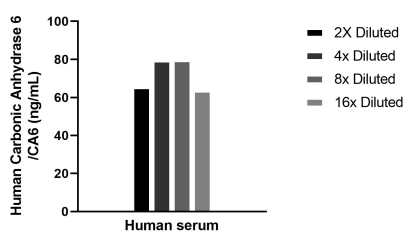
W: [ptgcn.com](http://ptgcn.com)

**This product is exclusively available under Proteintech Group brand and is not available to purchase from any other manufacturer.**

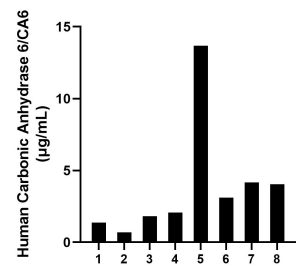
Selected Validation Data



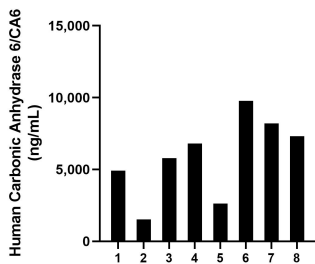
Sandwich ELISA standard curve of MP02211-2, Human Carbonic Anhydrase 6/CA6 Recombinant Matched Antibody Pair - PBS only. 85940-1-PBS was coated to a plate as the capture antibody and incubated with serial dilutions of standard Eg2963. 85940-2-PBS was HRP conjugated as the detection antibody. Range: 31.3-2000 pg/mL



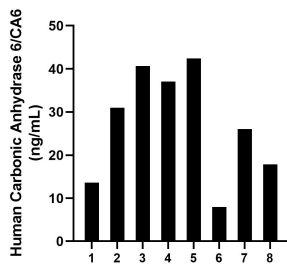
The mean Carbonic Anhydrase 6/CA6 concentration was determined to be 71.8 ng/mL in human serum.



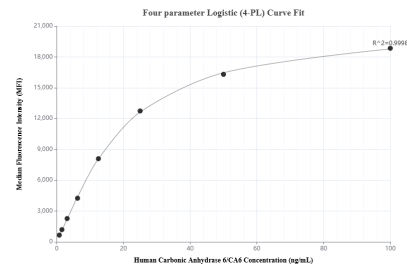
Human milk of eight individual healthy human donors was measured. The Carbonic Anhydrase 6/CA6 concentration of detected samples was determined to be 3.9 µg/mL with a range of 0.7-13.7 µg/mL



Saliva of eight individual healthy human donors was measured. The Carbonic Anhydrase 6/CA6 concentration of detected samples was determined to be 5,869.5 ng/mL with a range of 1,531.8-9,760.2 ng/mL



Serum of eight individual healthy human donors was measured. The Carbonic Anhydrase 6/CA6 concentration of detected samples was determined to be 27.1 ng/mL with a range of 8.0-42.4 ng/mL



Cytometric bead array standard curve of MP02211-1, Carbonic Anhydrase 6/CA6 Recombinant Matched Antibody Pair, PBS Only. Capture antibody: 85940-2-PBS. Detection antibody: 85940-1-PBS. Standard: Eg2963. Range: 0.781-100 ng/mL