

For Research Use Only

FLI1 Recombinant antibody

Catalog Number: 85931-1-RR



Basic Information

Catalog Number: 85931-1-RR	GenBank Accession Number: BC010115	Purification Method: Protein A purification
Concentration: 1000 µg/ml	GeneID (NCBI): 2313	CloneNo.: 250294F12
Source: Rabbit	UNIPROT ID: Q01543	Recommended Dilutions: WB 1:5000-1:50000 IHC 1:500-1:2000 IF/ICC 1:500-1:2000
Isotype: IgG	Full Name: Friend leukemia virus integration 1	
Immunogen Catalog Number: AG36169	Calculated MW: 452 aa, 51 kDa Observed MW: 51 kDa	

Applications

Tested Applications:
WB, IHC, IF/ICC, ELISA

Species Specificity:
human, mouse

**Note-IHC: suggested antigen retrieval with
TE buffer pH 9.0; (*) Alternatively, antigen
retrieval may be performed with citrate
buffer pH 6.0**

Positive Controls:

WB : Jurkat cells, HL-60 cells, U-937 cells, A20 cells,
RAW 264.7 cells

IHC : mouse lung tissue,

IF/ICC : HEL cells, Jurkat cells

Background Information

Friend leukemia virus integration1 (FLI1) that is also termed EWSR2 encodes a sequence-specific transcriptional activator involved in Ewing's sarcoma (EWS), a malignant small, round, blue cell tumour. It is a rare disease in which cancer cells are found in the bone or in soft tissue. The most common areas in which it occurs are the pelvis, the femur, the humerus, the ribs and clavicle. EWS occurs most frequently in teenagers and young adults. FLI1 protein may act as an aberrant transcription factor, but exact mechanisms of oncogenesis remains unknown.

Storage

Storage:

Store at -20°C. Stable for one year after shipment.

Storage Buffer:

PBS with 0.02% sodium azide and 50% glycerol, pH7.3

Aliquoting is unnecessary for -20°C storage

For technical support and original validation data for this product please contact:

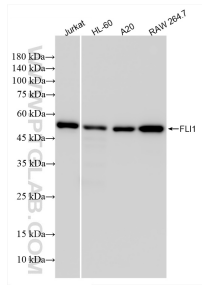
T: 4006900926

E: Proteintech-CN@ptglab.com

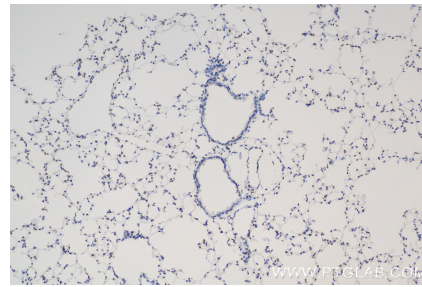
W: ptgcn.com

This product is exclusively available under Proteintech Group brand and is not available to purchase from any other manufacturer.

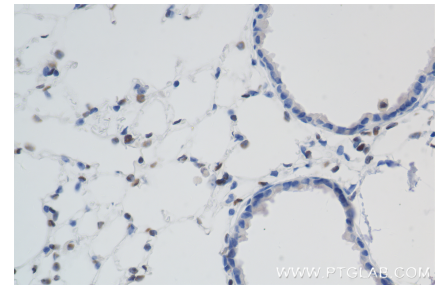
Selected Validation Data



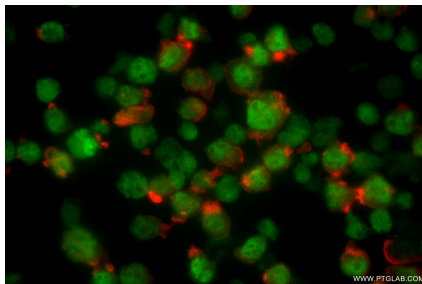
Various lysates were subjected to SDS PAGE followed by western blot with 85931-1-RR (FLI1 antibody) at dilution of 1:10000 incubated at room temperature for 1.5 hours.



Immunohistochemical analysis of paraffin-embedded mouse lung tissue slide using 85931-1-RR (FLI1 antibody) at dilution of 1:1000 (under 10x lens). Heat mediated antigen retrieval with Tris-EDTA buffer (pH 9.0).



Immunohistochemical analysis of paraffin-embedded mouse lung tissue slide using 85931-1-RR (FLI1 antibody) at dilution of 1:1000 (under 40x lens). Heat mediated antigen retrieval with Tris-EDTA buffer (pH 9.0).



Immunofluorescent analysis of (4% PFA) fixed HEL cells using FLI1 antibody (85931-1-RR, Clone: 250294F12) at dilution of 1:1000 and CoraLite®488-Conjugated Goat Anti-Rabbit IgG(H+L) (SA00013-2), CL594-Phalloidin (red).