

For Research Use Only

SRPRB Recombinant monoclonal antibody, PBS Only

Catalog Number: 85926-2-PBS



Basic Information

Catalog Number:

85926-2-PBS

Source:

Rabbit

Isotype:

IgG

Immunogen Catalog Number:

AG6215

GenBank Accession Number:

BC065299

GeneID (NCBI):

58477

UNIPROT ID:

Q9Y5M8

Full Name:

signal recognition particle receptor, B subunit

Calculated MW:

30 kDa

Observed MW:

30 kDa

Purification Method:

Protein A purification

CloneNo.:

242807E8

Applications

Tested Applications:

WB, IHC, IF/ICC, Indirect ELISA

Species Specificity:

human, mouse, rat

Background Information

Storage

Storage:

Store at -80°C.

The product is shipped with ice packs. Upon receipt, store it immediately at -80°C

Storage Buffer:

PBS only, pH7.3

For technical support and original validation data for this product please contact:

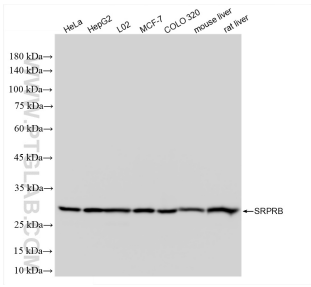
T: 4006900926

E: Proteintech-CN@ptglab.com

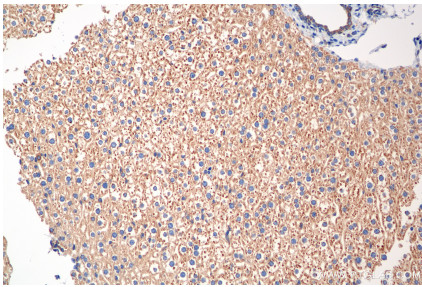
W: ptgcn.com

This product is exclusively available under Proteintech Group brand and is not available to purchase from any other manufacturer.

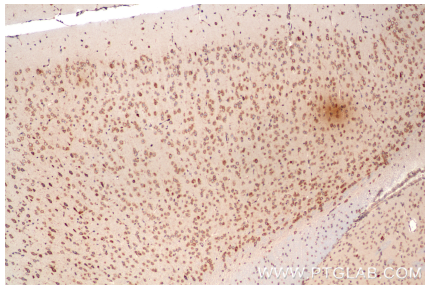
Selected Validation Data



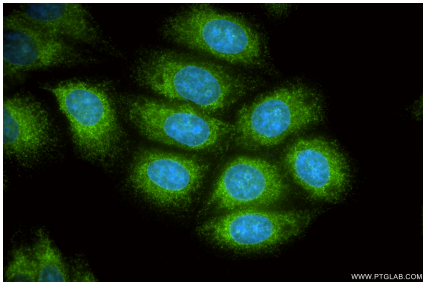
Various lysates were subjected to SDS PAGE followed by western blot with 85926-2-RR (SRPRB antibody) at dilution of 1:10000 incubated at room temperature for 1.5 hours. This data was developed using the same antibody clone with 85926-2-PBS in a different storage buffer formulation.



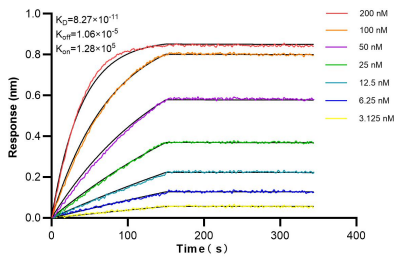
Immunohistochemical analysis of paraffin-embedded mouse liver tissue slide using 85926-2-RR (SRPRB antibody) at dilution of 1:500 (under 20x lens). Heat mediated antigen retrieval with Tris-EDTA buffer (pH 9.0). This data was developed using the same antibody clone with 85926-2-PBS in a different storage buffer formulation.



Immunohistochemical analysis of paraffin-embedded mouse brain tissue slide using 85926-2-RR (SRPRB antibody) at dilution of 1:500 (under 10x lens). Heat mediated antigen retrieval with Tris-EDTA buffer (pH 9.0). This data was developed using the same antibody clone with 85926-2-PBS in a different storage buffer formulation.



Immunofluorescent analysis of (-20°C Ethanol) fixed HepG2 cells using SRPRB antibody (85926-2-RR, Clone: 242807E8) at dilution of 1:200 and CoraLite®488-Conjugated Goat Anti-Rabbit IgG(H+L) (SA00013-2). This data was developed using the same antibody clone with 85926-2-PBS in a different storage buffer formulation.



Biolayer interferometry (BLI) kinetic assays of 85926-2-RR against Human SRPRB were performed. The affinity constant is 82.7 pM.