

For Research Use Only

CD109 Recombinant antibody, PBS Only (Capture/Detector)

Catalog Number: 85924-3-PBS



Basic Information

Catalog Number:

85924-3-PBS

Concentration:

1 mg/ml

Source:

Rabbit

Isotype:

IgG

Immunogen Catalog Number:

EG2673

GenBank Accession Number:

NM_133493.5

GeneID (NCBI):

135228

UNIPROT ID:

Q6YHK3-1

Full Name:

CD109 molecule

Calculated MW:

162 kDa

Purification Method:

Protein A purification

CloneNo.:

250327E5

Applications

Tested Applications:

Cytometric bead array, Sandwich ELISA, Indirect ELISA, Sample test

Species Specificity:

human

Background Information

Storage

Storage:

Store at -80°C.

The product is shipped with ice packs. Upon receipt, store it immediately at -80°C

Storage Buffer:

PBS only, pH7.3

For technical support and original validation data for this product please contact:

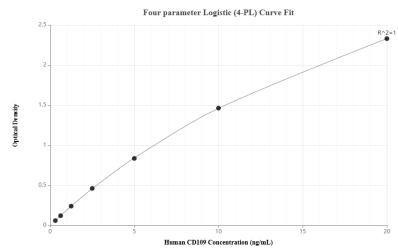
T: 4006900926

E: Proteintech-CN@ptglab.com

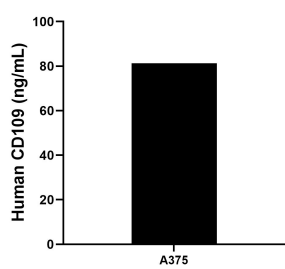
W: ptgcn.com

This product is exclusively available under Proteintech Group brand and is not available to purchase from any other manufacturer.

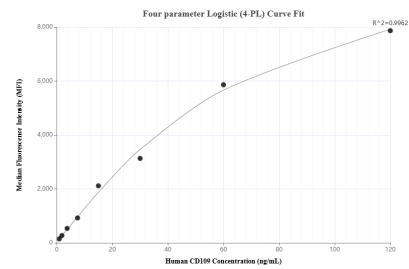
Selected Validation Data



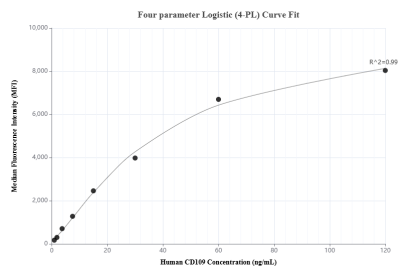
Sandwich ELISA standard curve of MP02191-2, Human CD109 Recombinant Matched Antibody Pair - PBS only. 85924-3-PBS was coated to a plate as the capture antibody and incubated with serial dilutions of standard Eg2673. 85924-2-PBS was HRP conjugated as the detection antibody. Range: 0.313-20 ng/mL



The mean CD109 concentration was determined to be 81.31 ng/mL in A375 cell extract based on a 1.8 mg/mL extract load.



Cytometric bead array standard curve of MP02191-2, CD109 Recombinant Matched Antibody Pair, PBS Only. Capture antibody: 85924-3-PBS. Detection antibody: 85924-2-PBS. Standard: Eg2673. Range: 0.938-120 ng/mL



Cytometric bead array standard curve of MP02191-1, CD109 Recombinant Matched Antibody Pair, PBS Only. Capture antibody: 85924-1-PBS. Detection antibody: 85924-3-PBS. Standard: Eg2673. Range: 0.938-120 ng/mL