

For Research Use Only

Mouse ATP1B1 Recombinant antibody, PBS Only (Capture/Detector)

Catalog Number: 85916-2-PBS



Basic Information

Catalog Number:

85916-2-PBS

Concentration:

1 mg/ml

Source:

Rabbit

Isotype:

IgG

Immunogen Catalog Number:

EG3007

GenBank Accession Number:

NM_009721.6

GeneID (NCBI):

11931

UNIPROT ID:

P14094

Full Name:

ATPase, Na⁺/K⁺ transporting, beta 1 polypeptide

Calculated MW:

35 kDa

Purification Method:

Protein A purification

CloneNo.:

243093E4

Applications

Tested Applications:

Cytometric bead array, Sandwich ELISA, Indirect ELISA, Sample test

Species Specificity:

mouse

Background Information

Storage

Storage:

Store at -80°C.

The product is shipped with ice packs. Upon receipt, store it immediately at -80°C

Storage Buffer:

PBS only, pH7.3

For technical support and original validation data for this product please contact:

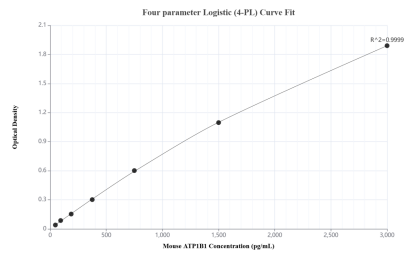
T: 4006900926

E: Proteintech-CN@ptglab.com

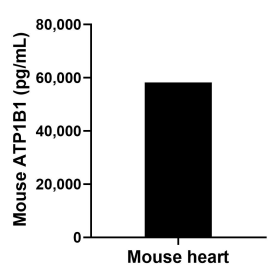
W: ptgcn.com

This product is exclusively available under Proteintech Group brand and is not available to purchase from any other manufacturer.

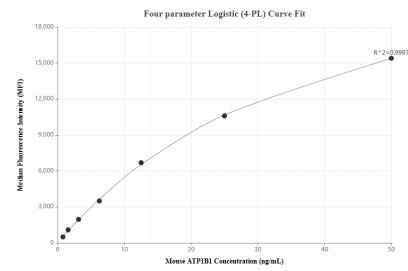
Selected Validation Data



Sandwich ELISA standard curve of MP02193-3, Mouse ATP1B1 Recombinant Matched Antibody Pair - PBS only. 85916-2-PBS was coated to a plate as the capture antibody and incubated with serial dilutions of standard Eg3007. 85916-1-PBS was HRP conjugated as the detection antibody. Range: 46.9-3000 pg/mL



The mean ATP1B1 concentration was determined to be 58,169.6 pg/mL in mouse heart extract based on a 6.9 mg/mL extract load.



Cytometric bead array standard curve of MP02193-2, MOUSE ATP1B1 Recombinant Matched Antibody Pair, PBS Only. Capture antibody: 85916-1-PBS. Detection antibody: 85916-2-PBS. Standard: Eg3007. Range: 0.781-50 ng/mL