

For Research Use Only

PTPN2 Recombinant antibody, PBS Only (Capture/Detector)

Catalog Number: 85915-2-PBS



Basic Information

Catalog Number:

85915-2-PBS

Concentration:

1 mg/ml

Source:

Rabbit

Isotype:

IgG

Immunogen Catalog Number:

AG1709

GenBank Accession Number:

BC016727

GeneID (NCBI):

5771

UNIPROT ID:

P17706

Full Name:

protein tyrosine phosphatase, non-receptor type 2

Calculated MW:

49 kDa

Purification Method:

Protein A purification

CloneNo.:

250281F7

Applications

Tested Applications:

Cytometric bead array, Sandwich ELISA, Indirect ELISA, Sample test

Species Specificity:

human

Background Information

Storage

Storage:

Store at -80°C.

The product is shipped with ice packs. Upon receipt, store it immediately at -80°C

Storage Buffer:

PBS only, pH7.3

For technical support and original validation data for this product please contact:

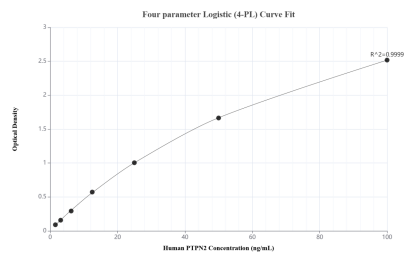
T: 4006900926

E: Proteintech-CN@ptglab.com

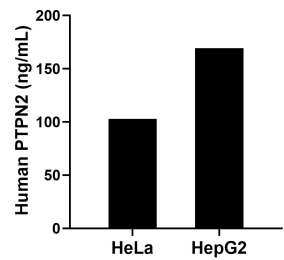
W: ptgcn.com

This product is exclusively available under Proteintech Group brand and is not available to purchase from any other manufacturer.

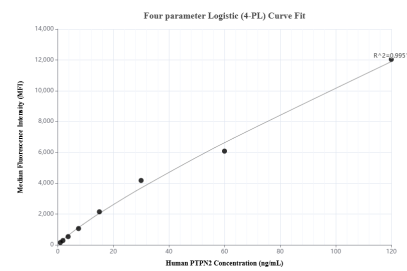
Selected Validation Data



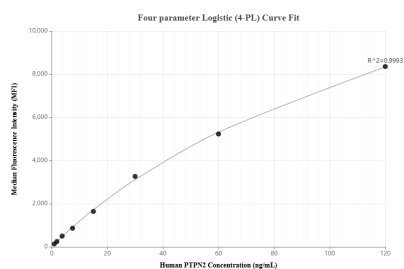
Sandwich ELISA standard curve of MP02187-2, Human PTPN2 Recombinant Matched Antibody Pair - PBS only. 85915-2-PBS was coated to a plate as the capture antibody and incubated with serial dilutions of standard Ag1709. 85915-1-PBS was HRP conjugated as the detection antibody. Range: 1.56-100 ng/mL



The mean PTPN2 concentration was determined to be 102.95 ng/mL in HeLa cell extract based on a 1.30 mg/mL extract load and 169.33 ng/mL in HepG2 cell extract based on a 0.90 mg/mL extract load.



Cytometric bead array standard curve of MP02187-1, PTPN2 Recombinant Matched Antibody Pair, PBS Only. Capture antibody: 85915-3-PBS. Detection antibody: 85915-2-PBS. Standard: Ag1709. Range: 0.938-120 ng/mL



Cytometric bead array standard curve of MP02187-2, PTPN2 Recombinant Matched Antibody Pair, PBS Only. Capture antibody: 85915-2-PBS. Detection antibody: 85915-1-PBS. Standard: Ag1709. Range: 0.938-120 ng/mL