

For Research Use Only

Stanniocalcin 2 Recombinant antibody

Catalog Number: 85910-1-RR



Basic Information

Catalog Number:

85910-1-RR

Concentration:

1000 µg/ml

Source:

Rabbit

Isotype:

IgG

Immunogen Catalog Number:

EG3119

GenBank Accession Number:

NM_003714.3

GeneID (NCBI):

8614

UNIPROT ID:

O76061

Full Name:

stanniocalcin 2

Calculated MW:

33 kDa

Observed MW:

33-35 kDa

Purification Method:

Protein A purification

CloneNo.:

250328A9

Recommended Dilutions:

WB: 1:2000-1:10000

Applications

Tested Applications:

WB, ELISA

Species Specificity:

human

Positive Controls:

WB : HCT 116 cells, T-47D cells, HeLa cells, HepG2 cells, MCF-7 cells

Background Information

Stanniocalcin (STC) is a family of secreted glycoprotein hormones that originally discovered in the corpuscles of Stannius, an endocrine gland of fish. STC1 and STC2, two homologues of STC family, are reported to involve in calcium and phosphate homeostasis. It is expressed in a wide variety of tissues such as kidney, spleen, heart, and pancreas. The protein may play a role in the regulation of renal and intestinal calcium and phosphate transport, cell metabolism, or cellular calcium/phosphate homeostasis. STC2 overexpression could promote tumor cell proliferation, invasion and metastasis in prostate cancer, ovarian cancer or neuroblastoma. STC2 is also vital for cytoprotective properties when exposed to ER stress and hypoxia.

Storage

Storage:

Store at -20°C. Stable for one year after shipment.

Storage Buffer:

PBS with 0.02% sodium azide and 50% glycerol, pH7.3

Aliquoting is unnecessary for -20°C storage

For technical support and original validation data for this product please contact:

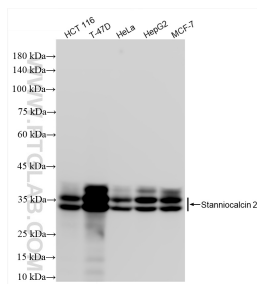
T: 4006900926

E: Proteintech-CN@ptglab.com

W: ptgcn.com

This product is exclusively available under Proteintech Group brand and is not available to purchase from any other manufacturer.

Selected Validation Data



Various lysates were subjected to SDS PAGE followed by western blot with 85910-1-RR (STC2 antibody) at dilution of 1:5000 incubated at room temperature for 1.5 hours.