

For Research Use Only

SERPINA12/Vaspin Recombinant antibody, PBS Only (Capture)

Catalog Number: 85908-2-PBS



Basic Information

Catalog Number:

85908-2-PBS

Concentration:

1 mg/ml

Source:

Rabbit

Isotype:

IgG

Immunogen Catalog Number:

EG2842

GenBank Accession Number:

NM_001304461.1

GeneID (NCBI):

145264

UNIPROT ID:

Q8IW75

Full Name:

serpin peptidase inhibitor, clade A
(alpha-1 antiproteinase, antitrypsin),
member 12

Calculated MW:

47 kDa

Purification Method:

Protein A purification

CloneNo.:

250315C11

Applications

Tested Applications:

Sandwich ELISA, Indirect ELISA, Sample test

Species Specificity:

human

Background Information

Storage

Storage:

Store at -80°C.

The product is shipped with ice packs. Upon receipt, store it immediately at -80°C

Storage Buffer:

PBS only, pH7.3

For technical support and original validation data for this product please contact:

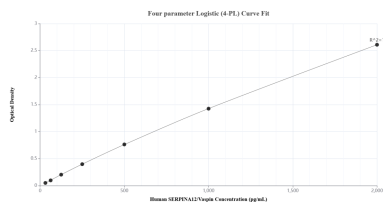
T: 4006900926

E: Proteintech-CN@ptglab.com

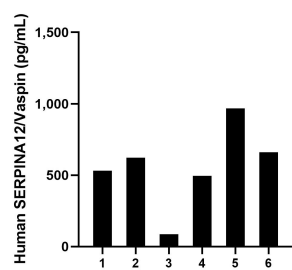
W: ptgcn.com

This product is exclusively available under Proteintech Group brand and is not available to purchase from any other manufacturer.

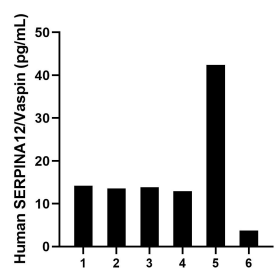
Selected Validation Data



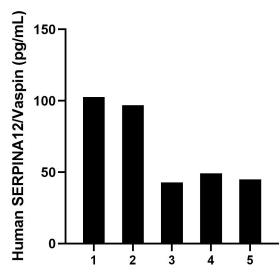
Sandwich ELISA standard curve of MP02213-1, Human SERPINA12/Vaspin Recombinant Matched Antibody Pair - PBS only. 85908-2-PBS was coated to a plate as the capture antibody and incubated with serial dilutions of standard Eg2842. 85908-3-PBS was HRP conjugated as the detection antibody. Range: 31.3-2000 pg/mL



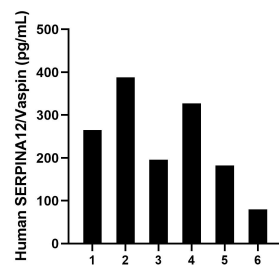
Saliva of six individual healthy human donors was measured. The SERPINA12/Vaspin concentration of detected samples was determined to be 560.7 pg/mL with a range of 87.5-968.1 pg/mL



Urine of six individual healthy human donors was measured. The SERPINA12/Vaspin concentration of detected samples was determined to be 16.8 pg/mL with a range of 3.7-42.4 pg/mL



Human milk of five individual healthy human donors was measured. The SERPINA12/Vaspin concentration of detected samples was determined to be 67.3 pg/mL with a range of 42.8-102.6 pg/mL



Serum of six individual healthy human donors was measured. The SERPINA12/Vaspin concentration of detected samples was determined to be 239.7 pg/mL with a range of 79.8-388.0 pg/mL