

For Research Use Only

GRK6 Recombinant antibody

Catalog Number: 85907-4-RR



Basic Information

Catalog Number:

85907-4-RR

Concentration:

1000 µg/ml

Source:

Rabbit

Isotype:

IgG

Immunogen Catalog Number:

AG1992

GenBank Accession Number:

BC017272

GeneID (NCBI):

2870

UNIPROT ID:

P43250

Full Name:

G protein-coupled receptor kinase 6

Calculated MW:

66 kDa

Observed MW:

65 kDa

Purification Method:

Protein A purification

CloneNo.:

250270B11

Recommended Dilutions:

WB 1:5000-1:50000

Applications

Tested Applications:

WB, ELISA

Species Specificity:

human

Positive Controls:

WB : MCF-7 cells, U2Os cells

Background Information

GRK6 (G Protein-Coupled Receptor Kinase 6) is a member of the G protein-coupled receptor kinase (GRK) family, which plays a crucial role in regulating the activity of G protein-coupled receptors (GPCRs). GRK6 specifically phosphorylates the activated forms of GPCRs, initiating their desensitization, internalization, and signaling events that lead to receptor deactivation. This process is essential for maintaining proper cellular responses to extracellular signals.

Storage

Storage:

Store at -20°C. Stable for one year after shipment.

Storage Buffer:

PBS with 0.02% sodium azide and 50% glycerol, pH7.3

Aliquoting is unnecessary for -20°C storage

For technical support and original validation data for this product please contact:

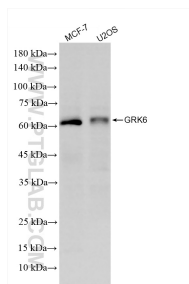
T: 4006900926

E: Proteintech-CN@ptglab.com

W: ptgcn.com

This product is exclusively available under Proteintech Group brand and is not available to purchase from any other manufacturer.

Selected Validation Data



Various lysates were subjected to SDS PAGE followed by western blot with 85907-4-RR (GRK6 antibody) at dilution of 1:10000 incubated at room temperature for 1.5 hours.