

For Research Use Only

SPARCL1 Recombinant antibody, PBS Only (Detector)

Catalog Number: 85906-2-PBS



Basic Information

Catalog Number:

85906-2-PBS

Concentration:

1 mg/ml

Source:

Rabbit

Isotype:

IgG

Immunogen Catalog Number:

EG2837

GenBank Accession Number:

NM_004684.5

GeneID (NCBI):

8404

UNIPROT ID:

Q8N4S1

Full Name:

SPARC-like 1 (hevin)

Calculated MW:

75 kDa

Purification Method:

Protein A purification

CloneNo.:

250331B4

Applications

Tested Applications:

Cytometric bead array, Sandwich ELISA, Indirect ELISA, Sample test

Species Specificity:

human

Background Information

Storage

Storage:

Store at -80°C.

The product is shipped with ice packs. Upon receipt, store it immediately at -80°C

Storage Buffer:

PBS only, pH7.3

For technical support and original validation data for this product please contact:

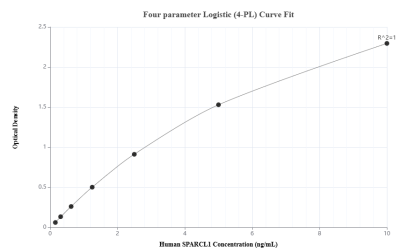
T: 4006900926

E: Proteintech-CN@ptglab.com

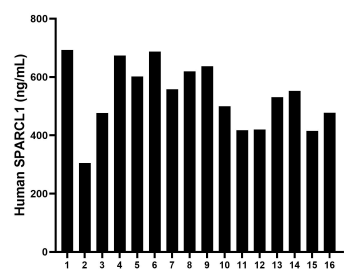
W: ptgcn.com

This product is exclusively available under Proteintech Group brand and is not available to purchase from any other manufacturer.

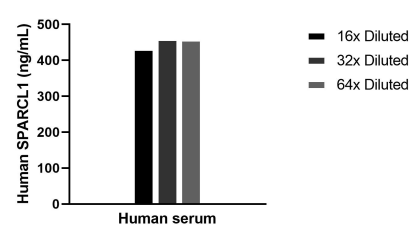
Selected Validation Data



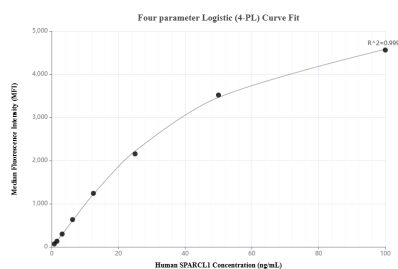
Sandwich ELISA standard curve of MP02200-1, Human SPARCL1 Recombinant Matched Antibody Pair - PBS only. 85906-3-PBS was coated to a plate as the capture antibody and incubated with serial dilutions of standard Eg2837. 85906-2-PBS was HRP conjugated as the detection antibody. Range: 0.156-10 ng/mL



Serum of sixteen individual healthy human donors was measured. The human SPARCL1 concentration of detected samples was determined to be 535.16 ng/mL with a range of 304.76 - 693.17 ng/mL



The mean SPARCL1 concentration was determined to be 448.7 ng/mL in Human serum.



Cytometric bead array standard curve of MP02200-1, SPARCL1 Recombinant Matched Antibody Pair, PBS Only. Capture antibody: 85906-3-PBS. Detection antibody: 85906-2-PBS. Standard: Eg2837. Range: 0.781-100 ng/mL