

For Research Use Only

# SPARCL1 Recombinant antibody, PBS Only (Detector)

Catalog Number: 85906-1-PBS



## Basic Information

Catalog Number:

85906-1-PBS

Concentration:

1 mg/ml

Source:

Rabbit

Isotype:

IgG

Immunogen Catalog Number:

EG2837

GenBank Accession Number:

NM\_004684.5

GeneID (NCBI):

8404

UNIPROT ID:

Q8N4S1

Full Name:

SPARC-like 1 (hevin)

Calculated MW:

75 kDa

Purification Method:

Protein A purification

CloneNo.:

250331F2

## Applications

Tested Applications:

Cytometric bead array, Indirect ELISA, Sample test

Species Specificity:

human

## Background Information

### Storage

Storage:

Store at -80°C.

The product is shipped with ice packs. Upon receipt, store it immediately at -80°C

Storage Buffer:

PBS only, pH7.3

For technical support and original validation data for this product please contact:

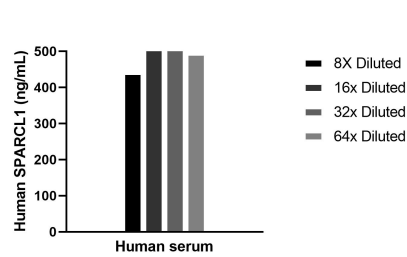
T: 4006900926

E: [Proteintech-CN@ptglab.com](mailto:Proteintech-CN@ptglab.com)

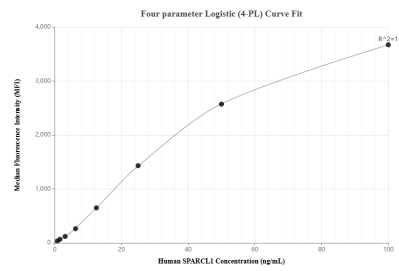
W: [ptgcn.com](http://ptgcn.com)

This product is exclusively available under Proteintech Group brand and is not available to purchase from any other manufacturer.

# Selected Validation Data



The mean SPARCL1 concentration was determined to be 508.2 ng/mL in Human serum.



Cytometric bead array standard curve of MP02200-2, SPARCL1 Recombinant Matched Antibody Pair, PBS Only. Capture antibody: 85906-3-PBS. Detection antibody: 85906-1-PBS. Standard: Eg2837. Range: 0.781-100 ng/mL.