

For Research Use Only

PTPN1/PTP1B Recombinant antibody

Catalog Number: 85905-5-RR



Basic Information

Catalog Number:

85905-5-RR

Concentration:

1000 µg/ml

Source:

Rabbit

Isotype:

IgG

Immunogen Catalog Number:

AG1878

GenBank Accession Number:

BC015660

GeneID (NCBI):

5770

UNIPROT ID:

P18031

Full Name:

protein tyrosine phosphatase, non-receptor type 1

Calculated MW:

435 aa, 50 kDa

Observed MW:

52 kDa

Purification Method:

Protein A purification

CloneNo.:

250215G5

Recommended Dilutions:

WB 1:2000-1:10000

Applications

Tested Applications:

WB, ELISA

Species Specificity:

human

Positive Controls:

WB : Sp2/O cells, HeLa cells, Jurkat cells, THP-1 cells, BxPC-3 cells

Background Information

PTPN1 (protein tyrosine phosphatase, non-receptor type 1) is also named as PTP1B or PTP-1B, and belongs to the protein-tyrosine phosphatase family and non-receptor class 1 subfamily. PTPN1 is involved in the regulation of several important physiological pathways, which regulates both INS and leptin signaling, and interacts with the epidermal and platelet-derived growth factor receptors (PMID: 20101100). The gene might harbor variants influencing susceptibility to INS resistance and type 2 diabetes (PMID:15919813). The molecular mass of PTPN1 is 50 kDa, but sometimes some truncated forms can be detected as 48, 46, 39, 37 kDa due to non-specific proteolytic cleavage of PTP1B in different cells (PMID: 18253097).

Storage

Storage:

Store at -20°C. Stable for one year after shipment.

Storage Buffer:

PBS with 0.02% sodium azide and 50% glycerol, pH7.3

Aliquoting is unnecessary for -20°C storage

For technical support and original validation data for this product please contact:

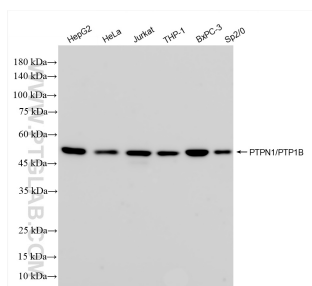
T: 4006900926

E: Proteintech-CN@ptglab.com

W: ptgcn.com

This product is exclusively available under Proteintech Group brand and is not available to purchase from any other manufacturer.

Selected Validation Data



Various lysates were subjected to SDS PAGE followed by western blot with 85905-5-RR (PTPN1 antibody) at dilution of 1:5000 incubated at room temperature for 1.5 hours.