

For Research Use Only

PTPN1/PTP1B Recombinant antibody

Catalog Number: 85905-4-RR



Basic Information

Catalog Number: 85905-4-RR	GenBank Accession Number: BC015660	Purification Method: Protein A purification
Concentration: 1000 µg/ml	GeneID (NCBI): 5770	CloneNo.: 250215G6
Source: Rabbit	UNIPROT ID: P18031	Recommended Dilutions: WB 1:5000-1:50000 IF/ICC 1:250-1:1000
Isotype: IgG	Full Name: protein tyrosine phosphatase, non-receptor type 1	
Immunogen Catalog Number: AG1878	Calculated MW: 435 aa, 50 kDa	
	Observed MW: 50 kDa	

Applications

Tested Applications: WB, IF/ICC, ELISA	Positive Controls:
Species Specificity: human	WB : HepG2 cells, HeLa cells, Jurkat cells, THP-1 cells IF/ICC : HeLa cells,

Background Information

PTPN1 (protein tyrosine phosphatase, non-receptor type 1) is also named as PTP1B or PTP-1B, and belongs to the protein-tyrosine phosphatase family and non-receptor class 1 subfamily. PTPN1 is involved in the regulation of several important physiological pathways, which regulates both INS and leptin signaling, and interacts with the epidermal and platelet-derived growth factor receptors (PMID: 20101100). The gene might harbor variants influencing susceptibility to INS resistance and type 2 diabetes (PMID:15919813). The molecular mass of PTPN1 is 50 kDa, but sometimes some truncated forms can be detected as 48, 46, 39, 37 kDa due to non-specific proteolytic cleavage of PTP1B in different cells (PMID: 18253097).

Storage

Storage:
Store at -20°C. Stable for one year after shipment.
Storage Buffer:
PBS with 0.02% sodium azide and 50% glycerol, pH7.3
Aliquoting is unnecessary for -20°C storage

For technical support and original validation data for this product please contact:

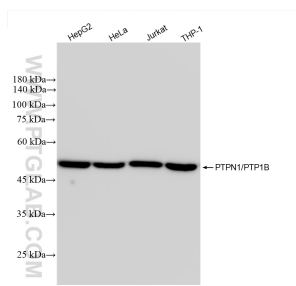
T: 4006900926

E: Proteintech-CN@ptglab.com

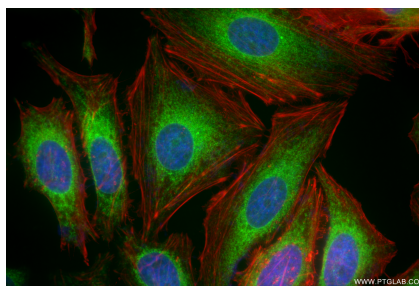
W: ptgcn.com

This product is exclusively available under Proteintech Group brand and is not available to purchase from any other manufacturer.

Selected Validation Data



Various lysates were subjected to SDS PAGE followed by western blot with 85905-4-RR (PTPN1 antibody) at dilution of 1:10000 incubated at room temperature for 1.5 hours.



Immunofluorescent analysis of (4% PFA) fixed HeLa cells using PTPN1 antibody (85905-4-RR, Clone: 250215G6) at dilution of 1:500 and CoraLite® 488-Conjugated Goat Anti-Rabbit IgG(H+L) (SA00013-2), CL594-Phalloidin (red).