

For Research Use Only

CCNB1 Recombinant antibody, PBS Only (Capture)

Catalog Number: 85895-2-PBS



Basic Information

Catalog Number:

85895-2-PBS

Concentration:

1 mg/ml

Source:

Rabbit

Isotype:

IgG

Immunogen Catalog Number:

AG29426

GenBank Accession Number:

BC006510

GeneID (NCBI):

891

UNIPROT ID:

P14635

Full Name:

cyclin B1

Calculated MW:

48 kDa

Purification Method:

Protein A purification

CloneNo.:

250227A7

Applications

Tested Applications:

Cytometric bead array, Indirect ELISA, Sample test

Species Specificity:

human

Background Information

Storage

Storage:

Store at -80°C.

The product is shipped with ice packs. Upon receipt, store it immediately at -80°C

Storage Buffer:

PBS only, pH7.3

For technical support and original validation data for this product please contact:

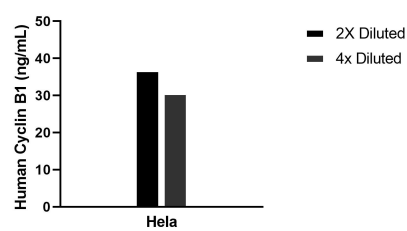
T: 4006900926

E: Proteintech-CN@ptglab.com

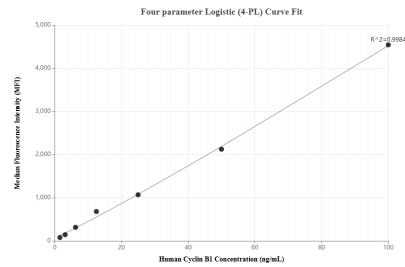
W: ptgcn.com

This product is exclusively available under Proteintech Group brand and is not available to purchase from any other manufacturer.

Selected Validation Data



The mean Cyclin B1 concentration was determined to be 33.7 ng/mL in HeLa cell extract based on a 1.3 mg/mL extract load.



Cytometric bead array standard curve of MP02202-1, Cyclin B1 Recombinant Matched Antibody Pair, PBS Only. Capture antibody: 85895-2-PBS. Detection antibody: 85895-1-PBS. Standard: Ag29426. Range: 1.563-100 ng/mL