

For Research Use Only

CCNB1 Recombinant antibody, PBS Only (Detector)

Catalog Number: 85895-1-PBS



Basic Information

Catalog Number:

85895-1-PBS

Concentration:

1 mg/ml

Source:

Rabbit

Isotype:

IgG

Immunogen Catalog Number:

AG29426

GenBank Accession Number:

BC006510

GeneID (NCBI):

891

UNIPROT ID:

P14635

Full Name:

cyclin B1

Calculated MW:

48 kDa

Purification Method:

Protein A purification

CloneNo.:

250227H1

Applications

Tested Applications:

Cytometric bead array, Sandwich ELISA, Indirect ELISA,
Sample test

Species Specificity:

human

Background Information

Storage

Storage:

Store at -80°C.

The product is shipped with ice packs. Upon receipt, store it immediately at -80°C

Storage Buffer:

PBS only, pH7.3

For technical support and original validation data for this product please contact:

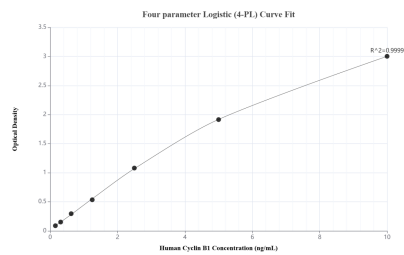
T: 4006900926

E: Proteintech-CN@ptglab.com

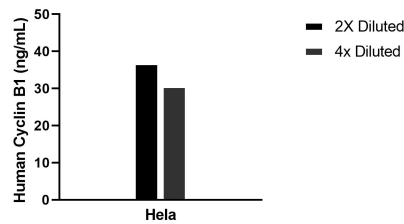
W: ptgcn.com

This product is exclusively available under Proteintech Group brand and is not available to purchase from any other manufacturer.

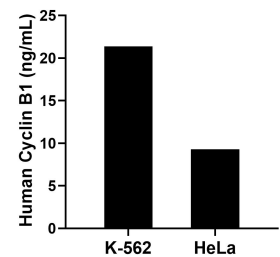
Selected Validation Data



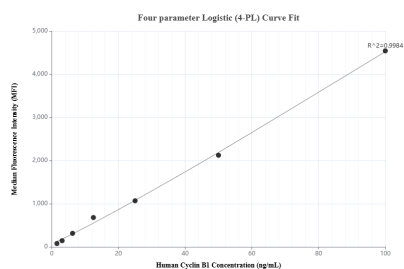
Sandwich ELISA standard curve of MP02202-2, Human Cyclin B1 Recombinant Matched Antibody Pair - PBS only. 85895-4-PBS was coated to a plate as the capture antibody and incubated with serial dilutions of standard Ag29426. 85895-1-PBS was HRP conjugated as the detection antibody. Range: 0.156-10 ng/mL



The mean Cyclin B1 concentration was determined to be 33.7 ng/mL in HeLa cell extract based on a 1.3 mg/mL extract load.



The mean Cyclin B1 concentration was determined to be 21.36 ng/mL in K-562 cell extract based on a 2.50 mg/mL extract load and 9.28 ng/mL in HeLa cell extract based on a 1.30 mg/mL extract load.



Cytometric bead array standard curve of MP02202-1, Cyclin B1 Recombinant Matched Antibody Pair, PBS Only. Capture antibody: 85895-2-PBS. Detection antibody: 85895-1-PBS. Standard: Ag29426. Range: 1.563-100 ng/mL