

For Research Use Only

KLHL2 Recombinant antibody

Catalog Number: 85893-1-RR



Basic Information

Catalog Number:

85893-1-RR

Concentration:

1000 μ g/ml

Source:

Rabbit

Isotype:

IgG

Immunogen Catalog Number:

AG5950

GenBank Accession Number:

BC022503

GeneID (NCBI):

11275

UNIPROT ID:

O95198

Full Name:

kelch-like 2, Mayven (Drosophila)

Calculated MW:

66 kDa

Observed MW:

66 kDa

Purification Method:

Protein A purification

CloneNo.:

250148G5

Recommended Dilutions:

WB: 1:5000-1:50000

IF/ICC: 1:200-1:800

Applications

Tested Applications:

WB, IF/ICC, ELISA

Species Specificity:

human

Positive Controls:

WB : HEK-293T cells, A431 cells, MCF-7 cells, K-562 cells

IF/ICC : MCF-7 cells,

Background Information

KLHL2 contains an SH3-binding domain in the N terminus and a POZ domain and 6 tandem repeats of approximately 50 amino acids each in the C terminus. In astrocytoma/glioblastoma cells, KLHL2 colocalized with actin filaments in the cytoskeleton remodeling regions in stress fibers and in patchy cortical actin-rich regions of the cell margins. In primary rat hippocampal neurons, it was highly expressed in the cell body and in neurite processes (PMID: 10397770).

Storage

Storage:

Store at -20°C. Stable for one year after shipment.

Storage Buffer:

PBS with 0.02% sodium azide and 50% glycerol, pH7.3

Aliquoting is unnecessary for -20°C storage

For technical support and original validation data for this product please contact:

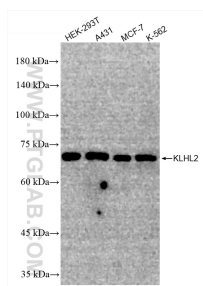
T: 4006900926

E: Proteintech-CN@ptglab.com

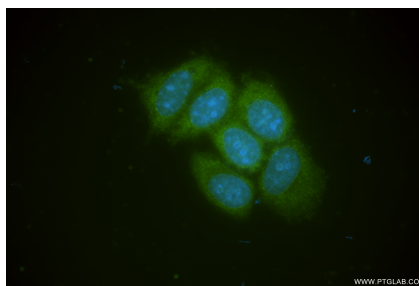
W: ptgcn.com

This product is exclusively available under Proteintech Group brand and is not available to purchase from any other manufacturer.

Selected Validation Data



Various lysates were subjected to SDS PAGE followed by western blot with 85893-1-RR (KLHL2 antibody) at dilution of 1:20000 incubated at room temperature for 1.5 hours.



Immunofluorescent analysis of (-20°C Ethanol) fixed MCF-7 cells using KLHL2 antibody (85893-1-RR, Clone: 250148G5) at dilution of 1:400 and CoraLite®488-Conjugated Goat Anti-Rabbit IgG(H+L) (SA00013-2).