

For Research Use Only

# RBBP6 Recombinant antibody

Catalog Number: 85884-5-RR



## Basic Information

Catalog Number:

85884-5-RR

Concentration:

1000 µg/ml

Source:

Rabbit

Isotype:

IgG

Immunogen Catalog Number:

AG2484

GenBank Accession Number:

BC029352

GeneID (NCBI):

5930

UNIPROT ID:

Q7Z6E9

Full Name:

retinoblastoma binding protein 6

Calculated MW:

1792 aa, 200 kDa

Observed MW:

250 kDa

Purification Method:

Protein A purification

CloneNo.:

250142C1

Recommended Dilutions:

WB 1:1000-1:4000

IF/ICC 1:500-1:2000

## Applications

Tested Applications:

WB, IF/ICC, ELISA

Species Specificity:

human, mouse

Positive Controls:

WB : EC109 cells, NIH/3T3 cells

IF/ICC : MCF-7 cells,

## Background Information

RBBP6 (retinoblastoma binding protein 6) is a multifunctional protein that interacts with both p53 and pRb and has been implicated in mRNA processing. It has also been identified as a putative E3 ubiquitin ligase due to the presence of a RING finger domain [PMID:18851979]. RBBP6 contains an N-terminal ubiquitin-like domain and a cysteine-rich RING finger-like domain, through which it promotes the ubiquitination of p53 by Hdm2 in an E4-like manner [PMID:17470788]. It is implicated in a diverse set of cellular functions, including mRNA metabolism, regulation of the cell cycle, tumorigenesis, and development [PMID:12938151,17470788].

## Storage

Storage:

Store at -20°C. Stable for one year after shipment.

Storage Buffer:

PBS with 0.02% sodium azide and 50% glycerol, pH7.3

Aliquoting is unnecessary for -20°C storage

For technical support and original validation data for this product please contact:

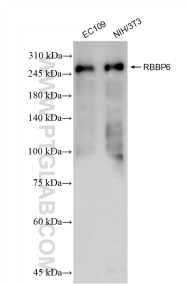
T: 4006900926

E: Proteintech-CN@ptglab.com

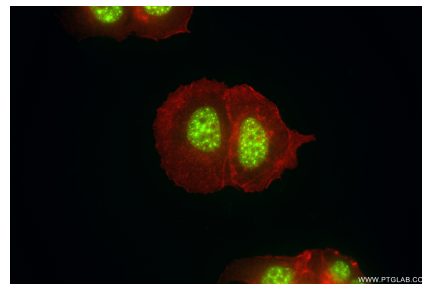
W: ptgcn.com

This product is exclusively available under Proteintech Group brand and is not available to purchase from any other manufacturer.

## Selected Validation Data



Various lysates were subjected to SDS PAGE followed by western blot with 85884-5-RR (RBBP6 antibody) at dilution of 1:2000 incubated at room temperature for 1.5 hours.



Immunofluorescent analysis of (4% PFA) fixed MCF-7 cells using RBBP6 antibody (85884-5-RR, Clone: 250142C1) at dilution of 1:1000 and CoraLite® 488-Conjugated Goat Anti-Rabbit IgG(H+L) (SA00013-2), CL594-Phalloidin (red).