

For Research Use Only

RBBP6 Recombinant antibody, PBS Only (Detector)

Catalog Number: 85884-1-PBS



Basic Information

Catalog Number:

85884-1-PBS

Concentration:

1 mg/ml

Source:

Rabbit

Isotype:

IgG

Immunogen Catalog Number:

AG2484

GenBank Accession Number:

BC029352

GeneID (NCBI):

5930

UNIPROT ID:

Q7Z6E9

Full Name:

retinoblastoma binding protein 6

Calculated MW:

1792 aa, 200 kDa

Purification Method:

Protein A purification

CloneNo.:

250142B11

Applications

Tested Applications:

Cytometric bead array, Sandwich ELISA, Indirect ELISA, Sample test

Species Specificity:

human

Background Information

Storage

Storage:

Store at -80°C.

The product is shipped with ice packs. Upon receipt, store it immediately at -80°C

Storage Buffer:

PBS only, pH7.3

For technical support and original validation data for this product please contact:

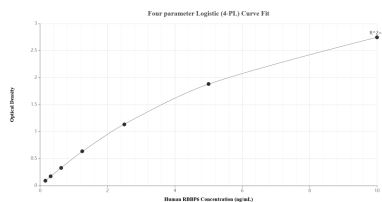
T: 4006900926

E: Proteintech-CN@ptglab.com

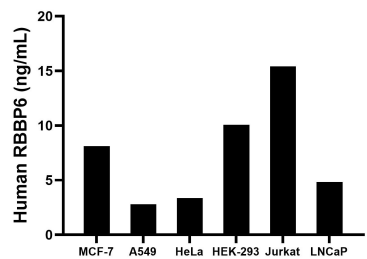
W: ptgcn.com

This product is exclusively available under Proteintech Group brand and is not available to purchase from any other manufacturer.

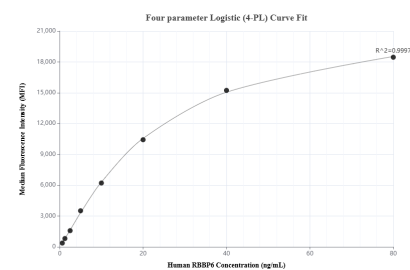
Selected Validation Data



Sandwich ELISA standard curve of MP02182-2, Human RBBP6 Recombinant Matched Antibody Pair - PBS only. 85884-2-PBS was coated to a plate as the capture antibody and incubated with serial dilutions of standard Ag2484. 85884-1-PBS was HRP conjugated as the detection antibody. Range: 0.156-10 ng/mL



The mean RBBP6 concentration was determined to be 8.11 ng/mL in MCF-7 cell extract based on a 2.40 mg/mL extract load, 2.79 ng/mL in A549 cell extract based on a 2.40 mg/mL extract load, 3.36 ng/mL in HeLa cell extract based on a 0.90 mg/mL extract load, 10.06 ng/mL in HEK-293 cell extract based on a 2.90 mg/mL extract load, 15.41 ng/mL in Jurkat cell extract based on a 2.20 mg/mL extract load and 4.84 ng/mL in LNCaP cell extract based on a 1.20 mg/mL extract



Cytometric bead array standard curve of MP02182-2, RBBP6 Recombinant Matched Antibody Pair, PBS Only. Capture antibody: 85884-2-PBS. Detection antibody: 85884-1-PBS. Standard: Ag2484. Range: 0.625-80 ng/mL