

For Research Use Only

# HK2 Recombinant antibody, PBS Only (Capture/Detector)

Catalog Number: 85875-3-PBS



## Basic Information

Catalog Number:

85875-3-PBS

Concentration:

1 mg/ml

Source:

Rabbit

Isotype:

IgG

Immunogen Catalog Number:

AG16895

GenBank Accession Number:

BC021116

GeneID (NCBI):

3099

UNIPROT ID:

P52789

Full Name:

hexokinase 2

Calculated MW:

102 kDa

Purification Method:

Protein A purification

CloneNo.:

250190G7

## Applications

Tested Applications:

Cytometric bead array, Sandwich ELISA, Indirect ELISA,  
Sample test

Species Specificity:

human

## Background Information

### Storage

Storage:

Store at -80°C.

**The product is shipped with ice packs. Upon receipt, store it immediately at -80°C**

Storage Buffer:

PBS only, pH7.3

For technical support and original validation data for this product please contact:

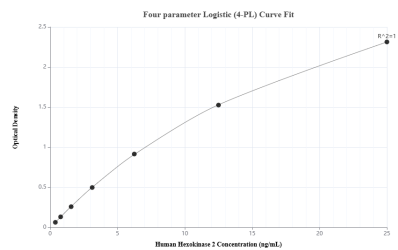
T: 4006900926

E: [Proteintech-CN@ptglab.com](mailto:Proteintech-CN@ptglab.com)

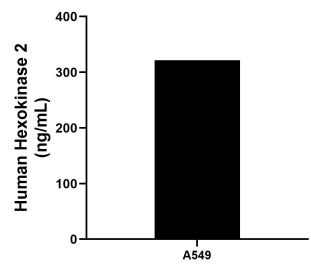
W: [ptgcn.com](http://ptgcn.com)

**This product is exclusively available under Proteintech Group brand and is not available to purchase from any other manufacturer.**

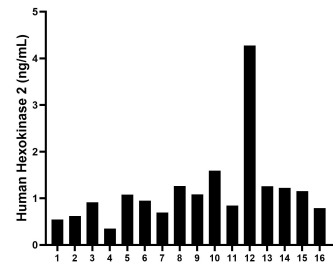
## Selected Validation Data



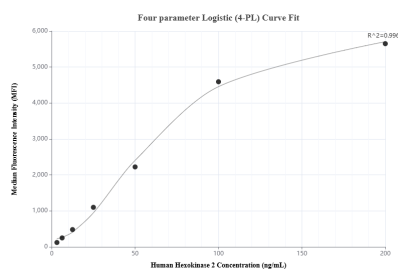
Sandwich ELISA standard curve of MP02173-3, Human Hexokinase 2 Recombinant Matched Antibody Pair - PBS only. 85875-3-PBS was coated to a plate as the capture antibody and incubated with serial dilutions of standard Ag16895. 85875-1-PBS was HRP conjugated as the detection antibody. Range: 0.391-25 ng/mL



The mean Hexokinase 2 concentration was determined to be 321.70 ng/mL in A549 cell extract based on a 1.3 mg/mL extract load.



Serum of sixteen individual healthy human donors was measured. The human Hexokinase 2 concentration of detected samples was determined to be 1.16 ng/mL with a range of 0.35 - 4.27 ng/mL.



Cytometric bead array standard curve of MP02173-2, Hexokinase 2 Recombinant Matched Antibody Pair, PBS Only. Capture antibody: 85875-1-PBS. Detection antibody: 85875-3-PBS. Standard: Ag16895. Range: 3.125-200 ng/mL