

For Research Use Only

CPLX1 Recombinant antibody, PBS Only (Capture)

Catalog Number: 85874-4-PBS



Basic Information

Catalog Number:

85874-4-PBS

Concentration:

1 mg/ml

Source:

Rabbit

Isotype:

IgG

Immunogen Catalog Number:

AG0387

GenBank Accession Number:

BC002471

GeneID (NCBI):

10815

UNIPROT ID:

O14810

Full Name:

complexin 1

Calculated MW:

15 kDa

Purification Method:

Protein A purification

CloneNo.:

250131C12

Applications

Tested Applications:

Cytometric bead array, Sandwich ELISA, Indirect ELISA, Sample test

Species Specificity:

human

Background Information

Storage

Storage:

Store at -80°C.

The product is shipped with ice packs. Upon receipt, store it immediately at -80°C

Storage Buffer:

PBS only, pH7.3

For technical support and original validation data for this product please contact:

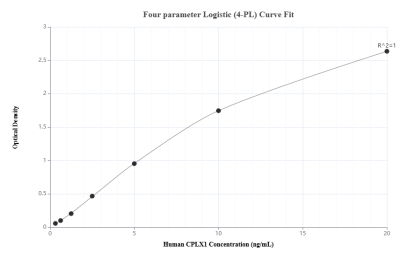
T: 4006900926

E: Proteintech-CN@ptglab.com

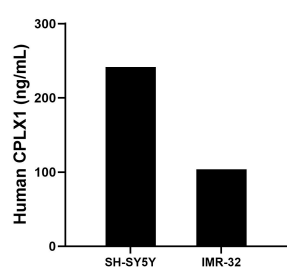
W: ptgcn.com

This product is exclusively available under Proteintech Group brand and is not available to purchase from any other manufacturer.

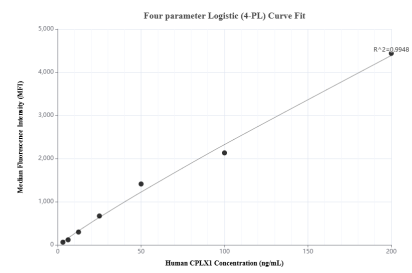
Selected Validation Data



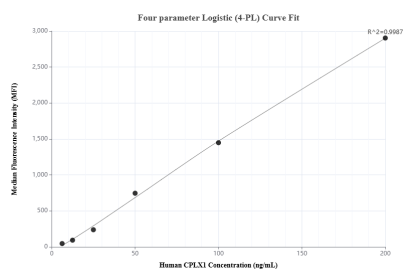
Sandwich ELISA standard curve of MP02175-1, Human CPLX1 Recombinant Matched Antibody Pair - PBS only. 85874-4-PBS was coated to a plate as the capture antibody and incubated with serial dilutions of standard Ag0387. 85874-3-PBS was HRP conjugated as the detection antibody. Range: 0.313-20 ng/mL



The mean CPLX1 concentration was determined to be 241.51 ng/mL in SH-SY5Y cell extract based on a 3.2 mg/mL extract load and 103.92 ng/mL in IMR-32 cell extract based on a 1.7 mg/mL extract load.



Cytometric bead array standard curve of MP02175-1, CPLX1 Recombinant Matched Antibody Pair, PBS Only. Capture antibody: 85874-4-PBS. Detection antibody: 85874-3-PBS. Standard: Ag0387. Range: 3.125-200 ng/mL



Cytometric bead array standard curve of MP02175-2, CPLX1 Recombinant Matched Antibody Pair, PBS Only. Capture antibody: 85874-4-PBS. Detection antibody: 85874-2-PBS. Standard: Ag0387. Range: 6.25-200 ng/mL