

For Research Use Only

CPLX1 Recombinant antibody

Catalog Number: 85874-1-RR



Basic Information

Catalog Number: 85874-1-RR	GenBank Accession Number: BC002471	Purification Method: Protein A purification
Concentration: 1000 µg/ml	GeneID (NCBI): 10815	CloneNo.: 250131A9
Source: Rabbit	UNIPROT ID: O14810	Recommended Dilutions: WB: 1:5000-1:50000
Isotype: IgG	Full Name: complexin 1	
Immunogen Catalog Number: AG0387	Calculated MW: 15 kDa	
	Observed MW: 15-20 kDa	

Applications

Tested Applications: WB, ELISA	Positive Controls:
Species Specificity: human, mouse, rat	WB : mouse brain tissue, SH-SY5Y cells, rat brain tissue, mouse cerebellum tissue, rat cerebellum tissue

Background Information

Complexin 1 (CPLX1) is a member of the complexin/syntaxin gene family, which are cytosolic proteins that function in synaptic vesicle exocytosis. Complexins are enriched in neurons where they colocalize with syntaxin and SNAP-25. Complexins bind weakly to syntaxin alone and not at all to synaptobrevin and SNAP-25, but strongly to the SNAP receptor-core complex composed of these three molecules. Complexins also compete with alpha-SNAP for binding to the core complex but not with other interacting molecules, including synaptotagmin I, and regulate the sequential interactions of alpha-SNAP and synaptotagmins with the SNAP receptor during exocytosis. CPLX1 binds to the SNAP receptor complex and disrupts it, leading to the release of transmitters. Alterations of complexins may contribute to the molecular substrate for abnormalities of neural connectivity in severe mental disorders.

Storage

Storage:
Store at -20°C. Stable for one year after shipment.
Storage Buffer:
PBS with 0.02% sodium azide and 50% glycerol, pH7.3
Aliquoting is unnecessary for -20°C storage

For technical support and original validation data for this product please contact:

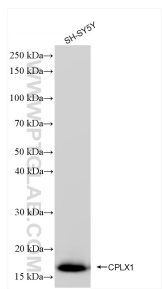
T: 4006900926

E: Proteintech-CN@ptglab.com

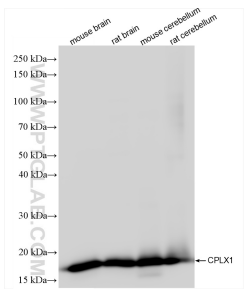
W: ptgcn.com

This product is exclusively available under Proteintech Group brand and is not available to purchase from any other manufacturer.

Selected Validation Data



SH-SY5Y cells were subjected to SDS PAGE followed by western blot with 85874-1-RR (CPLX1 antibody) at dilution of 1:20000 incubated at room temperature for 1.5 hours.



Various lysates were subjected to SDS PAGE followed by western blot with 85874-1-RR (CPLX1 antibody) at dilution of 1:20000 incubated at room temperature for 1.5 hours.