

For Research Use Only

# SYNJ2BP Recombinant antibody, PBS Only (Capture)

Catalog Number: 85870-4-PBS



## Basic Information

Catalog Number: 85870-4-PBS	GenBank Accession Number: BC007704	Purification Method: Protein A purification
Concentration: 1 mg/ml	GeneID (NCBI): 55333	CloneNo.: 250205D7
Source: Rabbit	UNIPROT ID: P57105	
Isotype: IgG	Full Name: synaptojanin 2 binding protein	
Immunogen Catalog Number: AG8130	Calculated MW: 145 aa, 16 kDa	
	Observed MW: 16 kDa	

## Applications

**Tested Applications:**  
WB, IF/ICC, Cytometric bead array, Indirect ELISA

**Species Specificity:**  
human, rat

## Background Information

Activin, a member of the TGF-beta superfamily, plays important roles in reproductive tissues as a stimulator of follicle-stimulating hormone (FSH) secretion and inhibits the proliferation of breast cancer cells. Activin receptor-interacting protein 2 (ARIP2), also known as synaptojanin-2-binding protein (SYNJ2BP), is located in the outer membrane of mitochondria. SYNJ2BP is widely distributed in various human tissues, and has been recently identified in mouse tissues as a regulatory protein of activin signal transduction by interacting with activin type II receptors. SYNJ2BP may be a putative growth-promoting factor involved in breast tumorigenesis and tumor development. A double band of size 15.9 kDa can be detected in Western blot (PMID: 23284606).

## Storage

**Storage:**  
Store at -80°C.

**The product is shipped with ice packs. Upon receipt, store it immediately at -80°C**

**Storage Buffer:**  
PBS only, pH7.3

For technical support and original validation data for this product please contact:

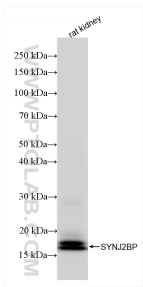
T: 4006900926

E: [Proteintech-CN@ptglab.com](mailto:Proteintech-CN@ptglab.com)

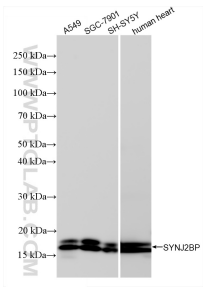
W: [ptgcn.com](http://ptgcn.com)

**This product is exclusively available under Proteintech Group brand and is not available to purchase from any other manufacturer.**

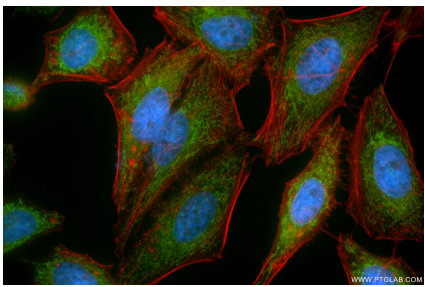
Selected Validation Data



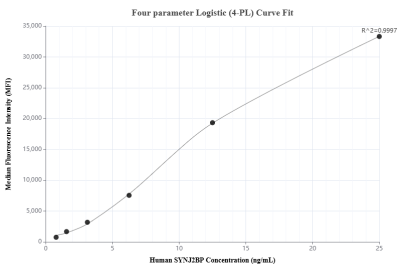
Rat kidney tissue lysates were subjected to SDS PAGE followed by western blot with 85870-4-RR (ARIP2; SYN2BP antibody) at dilution of 1:5000 incubated at room temperature for 1.5 hours. This data was developed using the same antibody clone with 85870-4-PBS in a different storage buffer formulation.



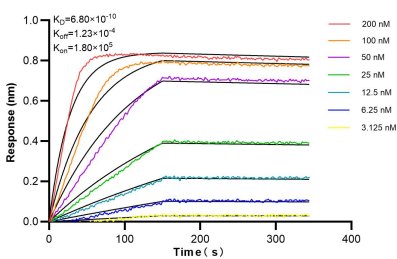
Various lysates were subjected to SDS PAGE followed by western blot with 85870-4-RR (ARIP2; SYN2BP antibody) at dilution of 1:5000 incubated at room temperature for 1.5 hours. This data was developed using the same antibody clone with 85870-4-PBS in a different storage buffer formulation.



Immunofluorescent analysis of (4% PFA) fixed HeLa cells using ARIP2; SYN2BP antibody (85870-4-RR, Clone: 250205D7 ) at dilution of 1:500 and CoraLite®488-Conjugated Goat Anti-Rabbit IgG(H+L) (SA00013-2), CL594-Phalloidin (red). This data was developed using the same antibody clone with 85870-4-PBS in a different storage buffer formulation.



Cytometric bead array standard curve of MPO2180-1, SYN2BP Recombinant Matched Antibody Pair, PBS Only. Capture antibody: 85870-4-PBS. Detection antibody: 85870-3-PBS. Standard: Ag8130. Range: 0.781-25 ng/mL



Biolayer interferometry (BLI) kinetic assays of 85870-4-RR against Human SYN2BP were performed. The affinity constant is 0.68 nM.