

For Research Use Only

Cryptochrome 2 Recombinant monoclonal antibody

Catalog Number: 85866-1-RR



Basic Information

Catalog Number:

85866-1-RR

Source:

Rabbit

Isotype:

IgG

Immunogen Catalog Number:

AG38484

GenBank Accession Number:

BC041814

GeneID (NCBI):

1408

UNIPROT ID:

Q49AN0

Full Name:

cryptochrome 2 (photolyase-like)

Calculated MW:

593 aa, 67 kDa

Observed MW:

65-70 kDa

Purification Method:

Protein A purification

CloneNo.:

250166A8

Recommended Dilutions:

WB: 1:2000-1:12000

IP: 0.5-4.0 ug for 1.0-3.0 mg of total protein lysate

Applications

Tested Applications:

WB, IP, ELISA

Species Specificity:

human, mouse

Positive Controls:

WB : MCF-7 cells, mouse brain tissue

IP : mouse brain tissue,

Background Information

Cryptochrome circadian clock 2 (CRY2) is a flavin adenine dinucleotide-binding protein that is a key component of the circadian core oscillator complex, which regulates the circadian clock. Loss of CRY2 stabilizes c-MYC and enhances cellular transformation. CRY2 can function as a co-factor for the SCF substrate adaptor FBXL3 (PMID: 27840026).

Storage

Storage:

Store at -20°C. Stable for one year after shipment.

Storage Buffer:

PBS with 0.02% sodium azide and 50% glycerol, pH7.3

Aliquoting is unnecessary for -20°C storage

For technical support and original validation data for this product please contact:

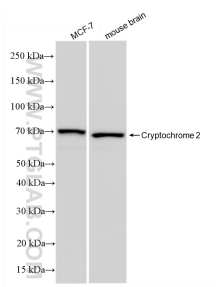
T: 4006900926

E: Proteintech-CN@ptglab.com

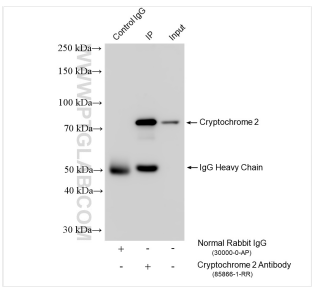
W: ptgcn.com

This product is exclusively available under Proteintech Group brand and is not available to purchase from any other manufacturer.

Selected Validation Data



Various lysates were subjected to SDS PAGE followed by western blot with 85866-1-RR (Cryptochrome 2 antibody) at dilution of 1:6000 incubated at room temperature for 1.5 hours.



IP result of anti-Cryptochrome 2 (IP:85866-1-RR, 4ug; Detection:85866-1-RR 1:2000) with mouse brain tissue lysate 1720 ug.