

For Research Use Only

# Cryptochrome 2 Recombinant monoclonal antibody, PBS Only

Catalog Number: 85866-1-PBS



## Basic Information

Catalog Number:

85866-1-PBS

Source:

Rabbit

Isotype:

IgG

Immunogen Catalog Number:

AG38484

GenBank Accession Number:

BC041814

GeneID (NCBI):

1408

UNIPROT ID:

Q49AN0

Full Name:

cryptochrome 2 (photolyase-like)

Calculated MW:

593 aa, 67 kDa

Observed MW:

65-70 kDa

Purification Method:

Protein A purification

CloneNo.:

250166A8

## Applications

Tested Applications:

WB, IP, Indirect ELISA

Species Specificity:

human, mouse

## Background Information

Cryptochrome circadian clock 2 (CRY2) is a flavin adenine dinucleotide-binding protein that is a key component of the circadian core oscillator complex, which regulates the circadian clock. Loss of CRY2 stabilizes c-MYC and enhances cellular transformation. CRY2 can function as a co-factor for the SCF substrate adaptor FBXL3 (PMID: 27840026).

## Storage

Storage:

Store at -80°C.

**The product is shipped with ice packs. Upon receipt, store it immediately at -80°C**

Storage Buffer:

PBS only, pH7.3

For technical support and original validation data for this product please contact:

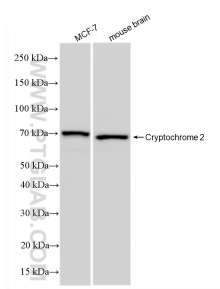
T: 4006900926

E: [Proteintech-CN@ptglab.com](mailto:Proteintech-CN@ptglab.com)

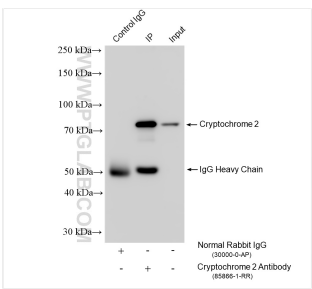
W: [ptgcn.com](http://ptgcn.com)

**This product is exclusively available under Proteintech Group brand and is not available to purchase from any other manufacturer.**

## Selected Validation Data



Various lysates were subjected to SDS PAGE followed by western blot with 85866-1-RR (Cryptochrome 2 antibody) at dilution of 1:6000 incubated at room temperature for 1.5 hours. This data was developed using the same antibody clone with 85866-1-PBS in a different storage buffer formulation.



IP result of anti-Cryptochrome 2 (IP:85866-1-RR, 4ug; Detection:85866-1-RR 1:2000) with mouse brain tissue lysate 1720 ug. This data was developed using the same antibody clone with 85866-1-PBS in a different storage buffer formulation.