

For Research Use Only

Mouse Ccl19 Recombinant antibody, PBS Only (Capture)

Catalog Number: 85861-3-PBS



Basic Information

Catalog Number:

85861-3-PBS

Concentration:

1 mg/ml

Source:

Rabbit

Isotype:

IgG

Immunogen Catalog Number:

EG3124

GenBank Accession Number:

NM_011888.2

GeneID (NCBI):

24047

UNIPROT ID:

O70460

Full Name:

chemokine (C-C motif) ligand 19

Calculated MW:

12 kDa

Purification Method:

Protein A purification

CloneNo.:

242867E7

Applications

Tested Applications:

Cytometric bead array, Sandwich ELISA, Indirect ELISA,
Sample test

Species Specificity:

mouse

Background Information

Storage

Storage:

Store at -80°C.

The product is shipped with ice packs. Upon receipt, store it immediately at -80°C

Storage Buffer:

PBS only, pH7.3

For technical support and original validation data for this product please contact:

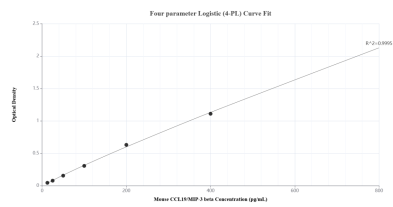
T: 4006900926

E: Proteintech-CN@ptglab.com

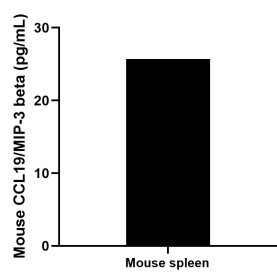
W: ptgcn.com

This product is exclusively available under Proteintech Group brand and is not available to purchase from any other manufacturer.

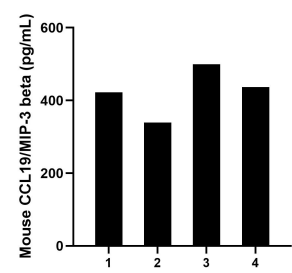
Selected Validation Data



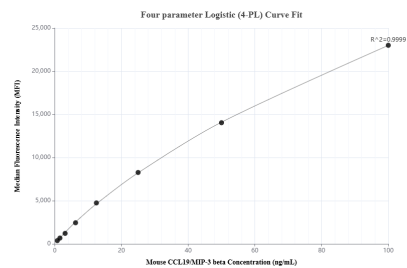
Sandwich ELISA standard curve of MP02165-1, Mouse CCL19/MIP-3 beta Recombinant Matched Antibody Pair - PBS only. 85861-3-PBS was coated to a plate as the capture antibody and incubated with serial dilutions of standard Eg3124. 85861-1-PBS was HRP conjugated as the detection antibody. Range: 12.5-800 pg/mL



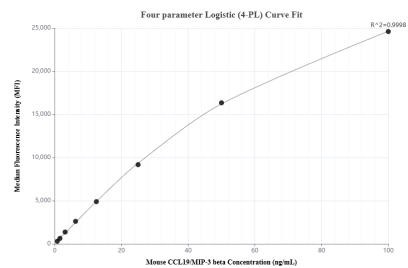
Mouse spleen tissue was removed, rinsed in 1x PBS, and kept on ice. The tissue was then homogenized using a tissue homogenizer and seeded into media containing RPMI 1640 supplemented with 10% fetal bovine serum, 2 mM L-glutamine, 100 U/mL penicillin, and 100 mg/mL streptomycin sulfate. Cells were cultured for 3 days. Aliquots of the cell culture supernatants were removed and assayed for levels of mouse CCL19/MIP-3 beta, and measured 25.7 pg/mL



Serum of four mice was measured. The CCL19/MIP-3 beta concentration of detected samples was determined to be 424.5 pg/mL with a range of 338.8-499.6 pg/mL



Cytometric bead array standard curve of MP02165-2, MOUSE CCL19/MIP-3 beta Recombinant Matched Antibody Pair, PBS Only. Capture antibody: 85861-3-PBS. Detection antibody: 85861-2-PBS. Standard: Eg3124. Range: 0.781-100 ng/mL



Cytometric bead array standard curve of MP02165-1, MOUSE CCL19/MIP-3 beta Recombinant Matched Antibody Pair, PBS Only. Capture antibody: 85861-3-PBS. Detection antibody: 85861-1-PBS. Standard: Eg3124. Range: 0.781-100 ng/mL