

For Research Use Only

CCL19/MIP-3 beta Recombinant monoclonal antibody

Catalog Number:85861-1-RR



Basic Information

Catalog Number: 85861-1-RR	GenBank Accession Number: NM_011888.2	Purification Method: Protein A purification
Source: Rabbit	GeneID (NCBI): 24047	CloneNo.: 242867C1
Isotype: IgG	UNIPROT ID: O70460	Recommended Dilutions: WB: 1:2000-1:10000 IHC: 1:500-1:2000
Immunogen Catalog Number: EG3124	Full Name: chemokine (C-C motif) ligand 19	
	Calculated MW: 12 kDa	

Applications

Tested Applications: WB, IHC, ELISA	Positive Controls:
Species Specificity: mouse	WB : Recombinant protein, Transfected with Mouse Ccl19 Transfected HEK-293T cells
Note-IHC: <i>suggested antigen retrieval with TE buffer pH 9.0; (*) Alternatively, antigen retrieval may be performed with citrate buffer pH 6.0</i>	IHC : mouse spleen tissue,

Background Information

CCL19, also known as MIP-3 β , is one of several CC cytokine genes clustered on the p-arm of chromosome 9. CCL19 may play a role in normal lymphocyte recirculation and homing. It also plays an important role in trafficking of T cells in thymus, and in T cell and B cell migration to secondary lymphoid organs. It specifically binds to chemokine receptor CCR7.

Storage

Storage:
Store at -20°C. Stable for one year after shipment.
Storage Buffer:
PBS with 0.02% sodium azide and 50% glycerol, pH7.3
Aliquoting is unnecessary for -20°C storage

For technical support and original validation data for this product please contact:

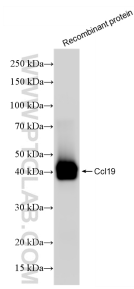
T: 4006900926

E: Proteintech-CN@ptglab.com

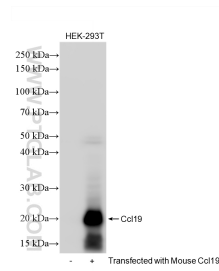
W: ptgcn.com

This product is exclusively available under Proteintech Group brand and is not available to purchase from any other manufacturer.

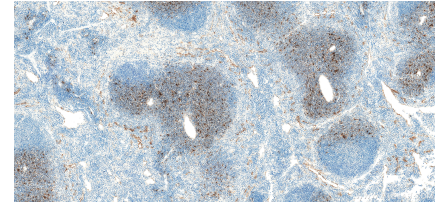
Selected Validation Data



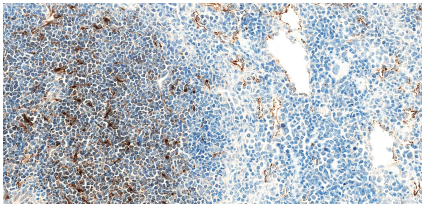
Mouse CCL19 Recombinant protein were subjected to SDS PAGE followed by western blot with 85861-1-RR (Ccl19 antibody) at dilution of 1:5000 incubated at room temperature for 1.5 hours.



Various lysates were subjected to SDS PAGE followed by western blot with 85861-1-RR (Ccl19 antibody) at dilution of 1:5000 incubated at room temperature for 1.5 hours.



Immunohistochemical analysis of paraffin-embedded mouse spleen tissue slide using 85861-1-RR (CCL19/MIP-3 beta antibody) at dilution of 1:1000 (under 10x lens). Heat mediated antigen retrieval with Tris-EDTA buffer (pH 9.0).



Immunohistochemical analysis of paraffin-embedded mouse spleen tissue slide using 85861-1-RR (CCL19/MIP-3 beta antibody) at dilution of 1:1000 (under 40x lens). Heat mediated antigen retrieval with Tris-EDTA buffer (pH 9.0).