

For Research Use Only

# BCL10 Recombinant monoclonal antibody, PBS Only (Capture)

Catalog Number: 85858-3-PBS



## Basic Information

Catalog Number:

85858-3-PBS

Source:

Rabbit

Isotype:

IgG

Immunogen Catalog Number:

AG12170

GenBank Accession Number:

BC053617

GeneID (NCBI):

8915

UNIPROT ID:

O95999

Full Name:

B-cell CLL/lymphoma 10

Calculated MW:

233 aa, 26 kDa

Purification Method:

Protein A purification

CloneNo.:

250149B11

## Applications

Tested Applications:

Cytometric bead array, Sandwich ELISA, Indirect ELISA

Species Specificity:

human

## Background Information

### Storage

Storage:

Store at -80°C.

The product is shipped with ice packs. Upon receipt, store it immediately at -80°C

Storage Buffer:

PBS only, pH7.3

For technical support and original validation data for this product please contact:

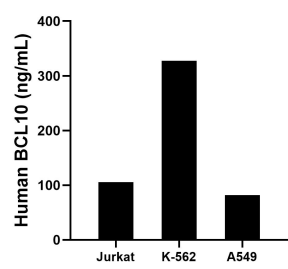
T: 4006900926

E: [Proteintech-CN@ptglab.com](mailto:Proteintech-CN@ptglab.com)

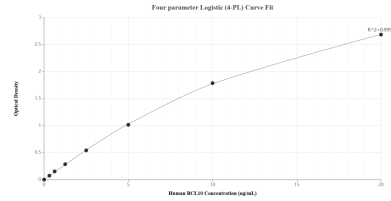
W: [ptgcn.com](http://ptgcn.com)

This product is exclusively available under Proteintech Group brand and is not available to purchase from any other manufacturer.

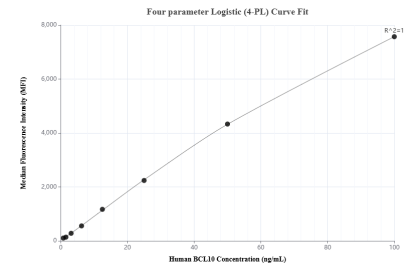
## Selected Validation Data



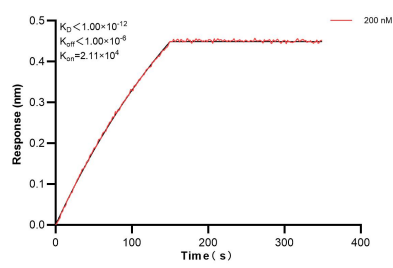
The mean BCL10 concentration was determined to be 105.67 ng/mL in Jurkat cell extract based on a 1.20 mg/mL extract load, 327.67 ng/mL in K-562 cell extract based on a 3.00 mg/mL extract load and 82.11 ng/mL in A549 cell extract based on a 1.10 mg/mL extract load.



Sandwich ELISA standard curve of MP02160-2, Human BCL10 Recombinant Matched Antibody Pair - PBS only. 85858-3-PBS was coated to a plate as the capture antibody and incubated with serial dilutions of standard Ag12170. 85858-2-PBS was HRP conjugated as the detection antibody. Range: 0.313-20 ng/mL.



Cytometric bead array standard curve of MP02160-2, BCL10 Recombinant Matched Antibody Pair, PBS Only. Capture antibody: 85858-3-PBS. Detection antibody: 85858-2-PBS. Standard: Ag12170. Range: 0.781-100 ng/mL.



Biolayer interferometry (BLI) kinetic assays of 85858-3-PBS against Human BCL10 were performed. The affinity constant is below 1 pM.