

For Research Use Only

BCL10 Recombinant antibody

Catalog Number: 85858-2-RR



Basic Information

Catalog Number:

85858-2-RR

Concentration:

1000 µg/ml

Source:

Rabbit

Isotype:

IgG

Immunogen Catalog Number:

AG12170

GenBank Accession Number:

BC053617

GeneID (NCBI):

8915

UNIPROT ID:

O95999

Full Name:

B-cell CLL/lymphoma 10

Calculated MW:

233 aa, 26 kDa

Observed MW:

30 kDa

Purification Method:

Protein A purification

CloneNo.:

250149A6

Recommended Dilutions:

WB 1:5000-1:50000

Applications

Tested Applications:

WB, ELISA

Species Specificity:

human

Positive Controls:

WB : A431 cells, K-562 cells, Ramos cells, Raji cells, A549 cells, Jurkat cells, PANC-1 cells

Background Information

Storage

Storage:

Store at -20°C. Stable for one year after shipment.

Storage Buffer:

PBS with 0.02% sodium azide and 50% glycerol, pH7.3

Aliquoting is unnecessary for -20°C storage

For technical support and original validation data for this product please contact:

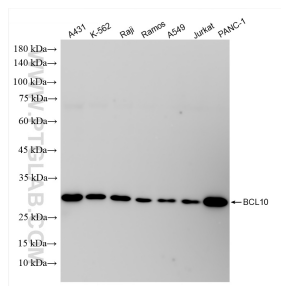
T: 4006900926

E: Proteintech-CN@ptglab.com

W: ptgcn.com

This product is exclusively available under Proteintech Group brand and is not available to purchase from any other manufacturer.

Selected Validation Data



Various lysates were subjected to SDS PAGE followed by western blot with 85858-2-RR (BCL10 antibody) at dilution of 1:10000 incubated at room temperature for 1.5 hours.